

Angiosperm phylogenetic trees from Soltis et. al (2000) (list of figures)

Figure 1. Summary tree of major groups that occurred in greater than 50% of the 1000 jackknife replicates.

Figure 2. The basal-most branches within the angiosperms.

Figure 3. The basal-most branches within the monocots and nearest eumagnoliid relatives.

Figure 4. The commelinoid monocots.

Figure 5. The basal-most groups of eudicots.

Figure 6. Saxifragales.

Figure 7. A portion of the eurosid I clade.

Figure 8. The other portion of the eurosid I clade plus the unplaced eurosid orders and families.

Figure 9. The eurosid II clade plus Myrtales.

Figure 10. The base of asterids.

Figure 11. The euasterid I clade.

Figure 12. The euasterid II clade.

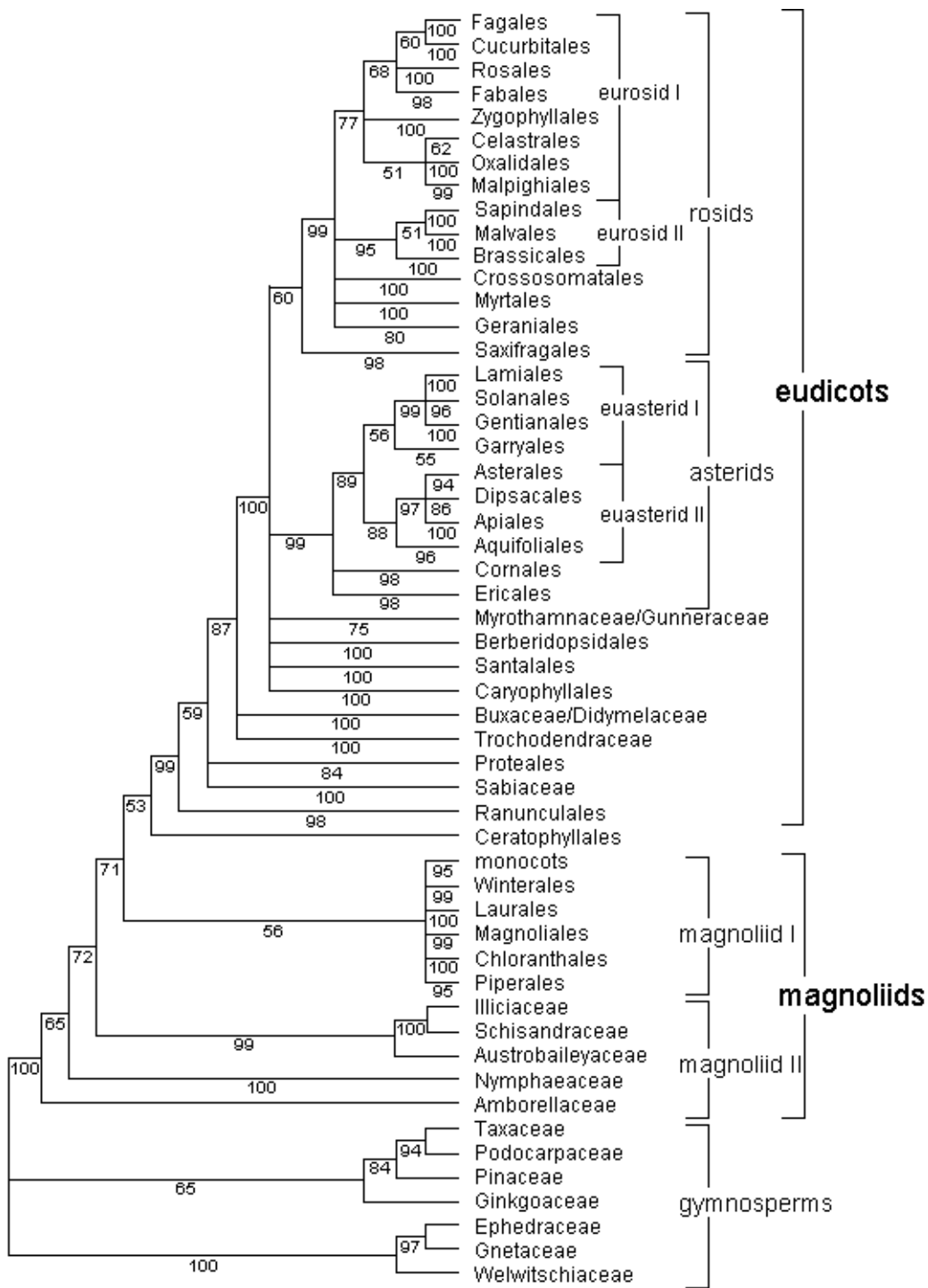


Figure 1. A summary of the major groups that occurred in greater than 50% of the 1000 jackknife replicates; orders and informal names are more or less those of the APG system (1998). The gymnosperms are not arranged to reflect relationships, but rather they were collectively specified as the outgroups without any attempt to estimate which, if any, were closest to the angiosperms.

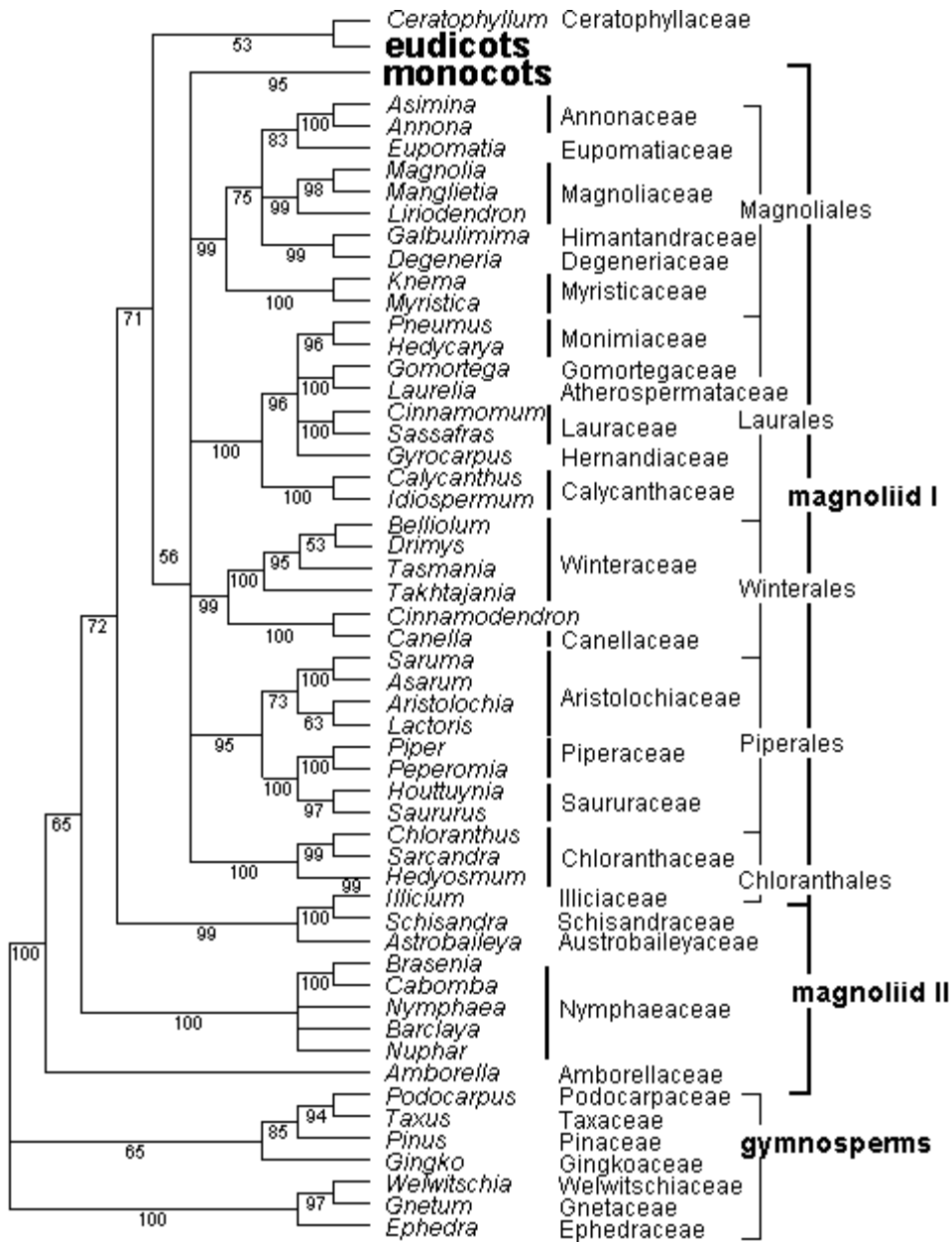


Figure 2. The jackknife consensus tree focusing on the basal-most branches within the angiosperms (monocots and eudicots are shown as single terminals). Note that Amborellaceae, Austrobaileyaceae, Ceratophyllaceae, Illiciaceae, Nymphaeaceae, and Schisandraceae are not placed to order.

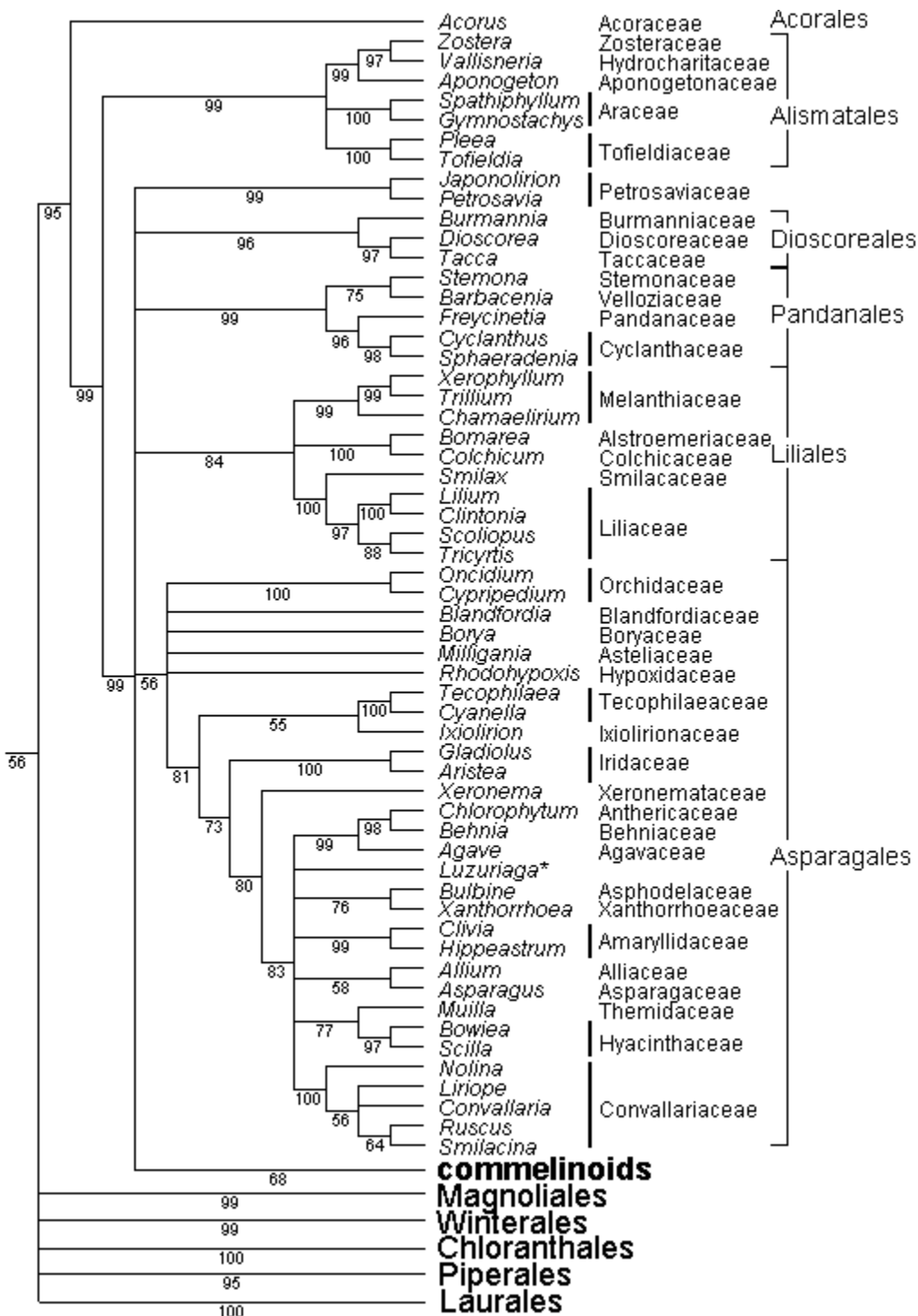


Figure 3. The jackknife consensus tree focusing on the basal-most branches within the monocots and nearest eumagnoliid relatives. The commelinoid orders and families are represented as a single terminal. Note that Petrosaviaceae are unplaced to order.

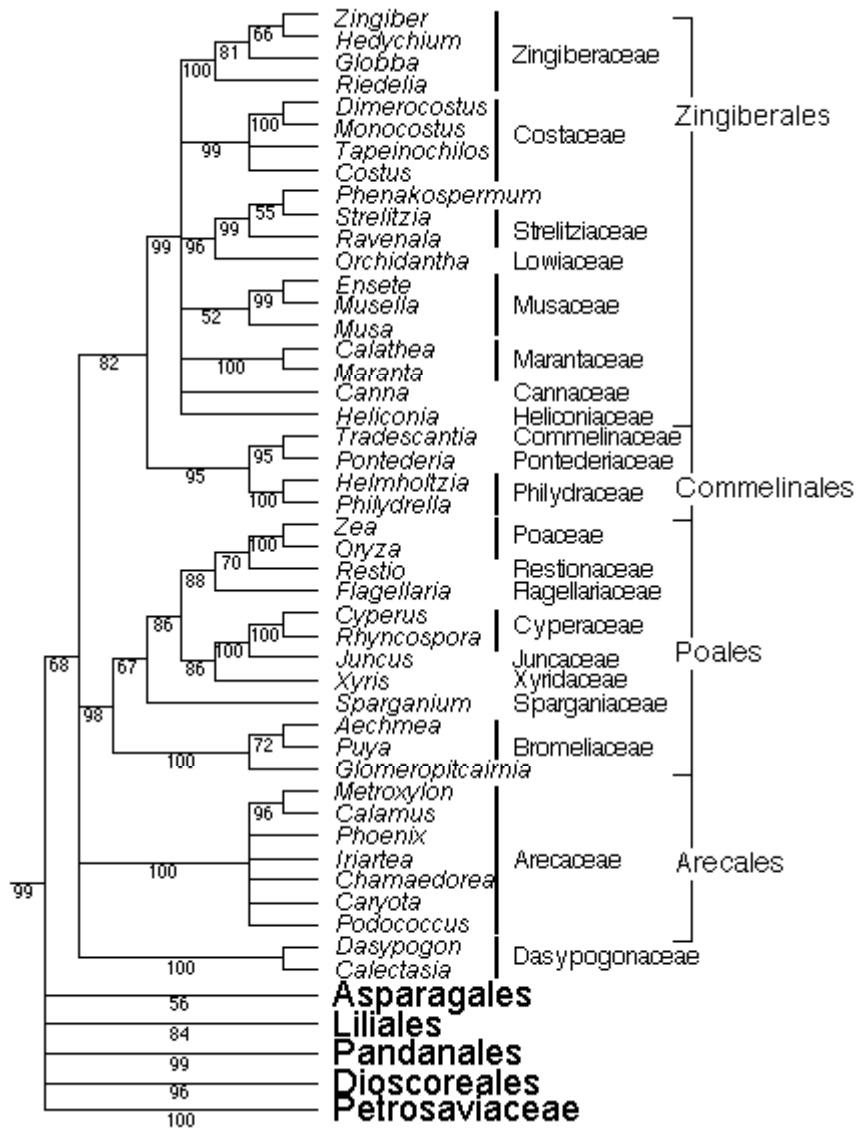


Figure 4. The jackknife consensus tree focusing on the commelinoid monocots. Note that Dasypogonaceae are unplaced to order.

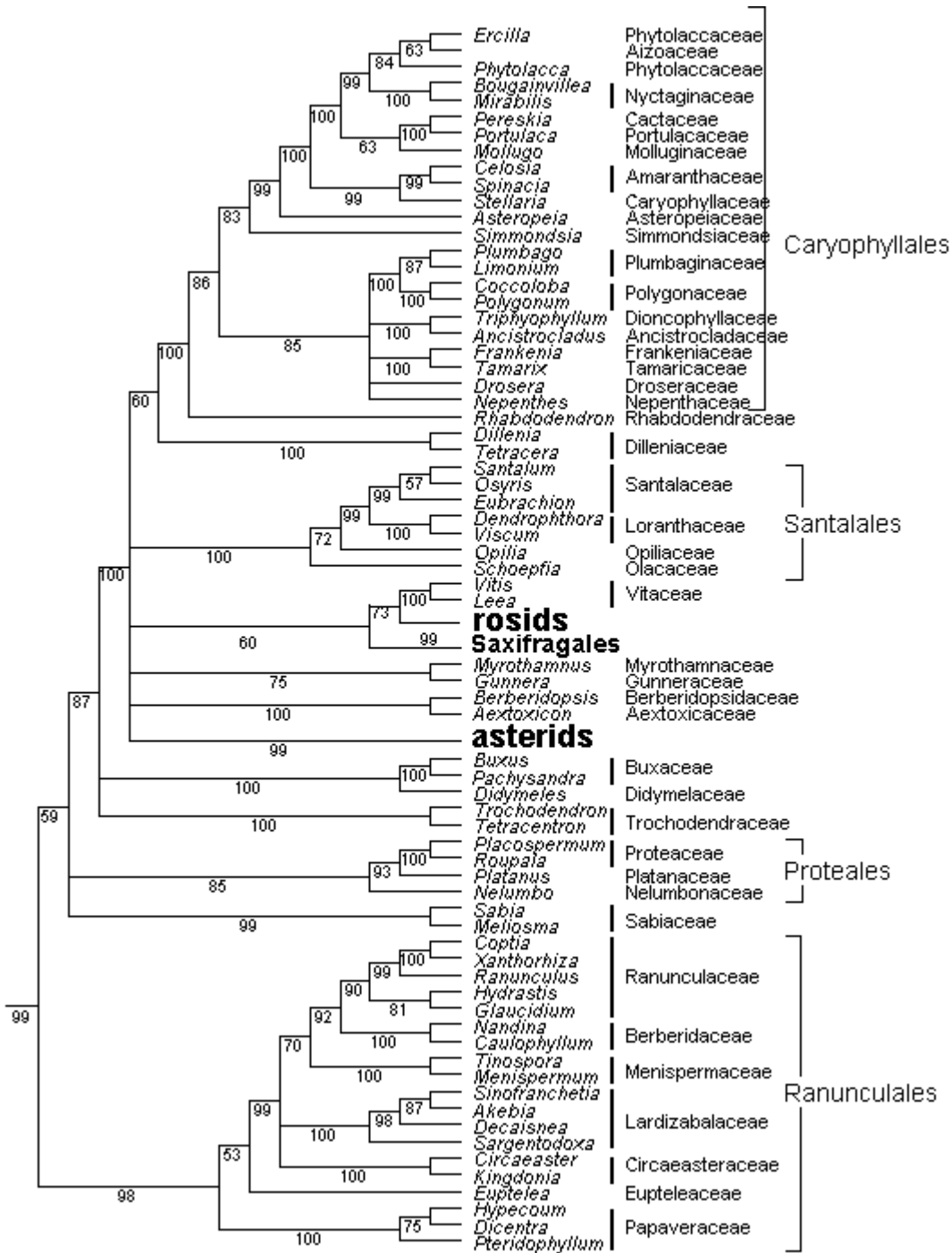


Figure 5. The jackknife consensus tree focusing on the basal-most groups of eudicots. Asterids and rosids (as well as Saxifragales) as illustrated as single terminals. Note that Buxaceae, Didymelaceae, Dilleniaceae, Sabiaceae, Trochodendraceae, and Vitaceae are unplaced to order.

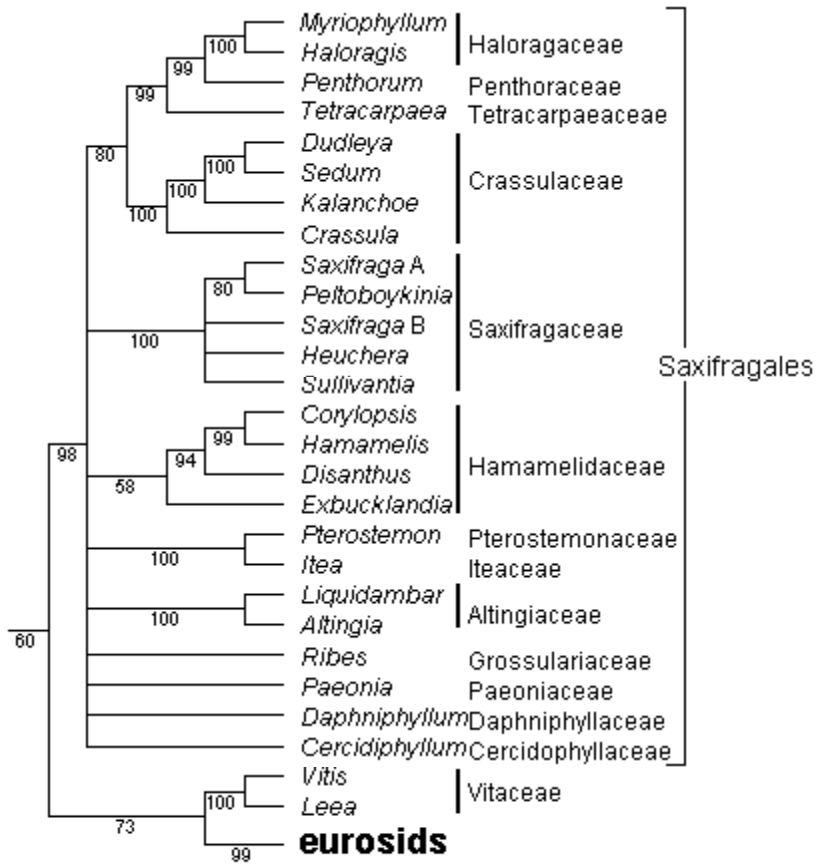


Figure 6. The jackknife consensus tree focusing on Saxifragales.

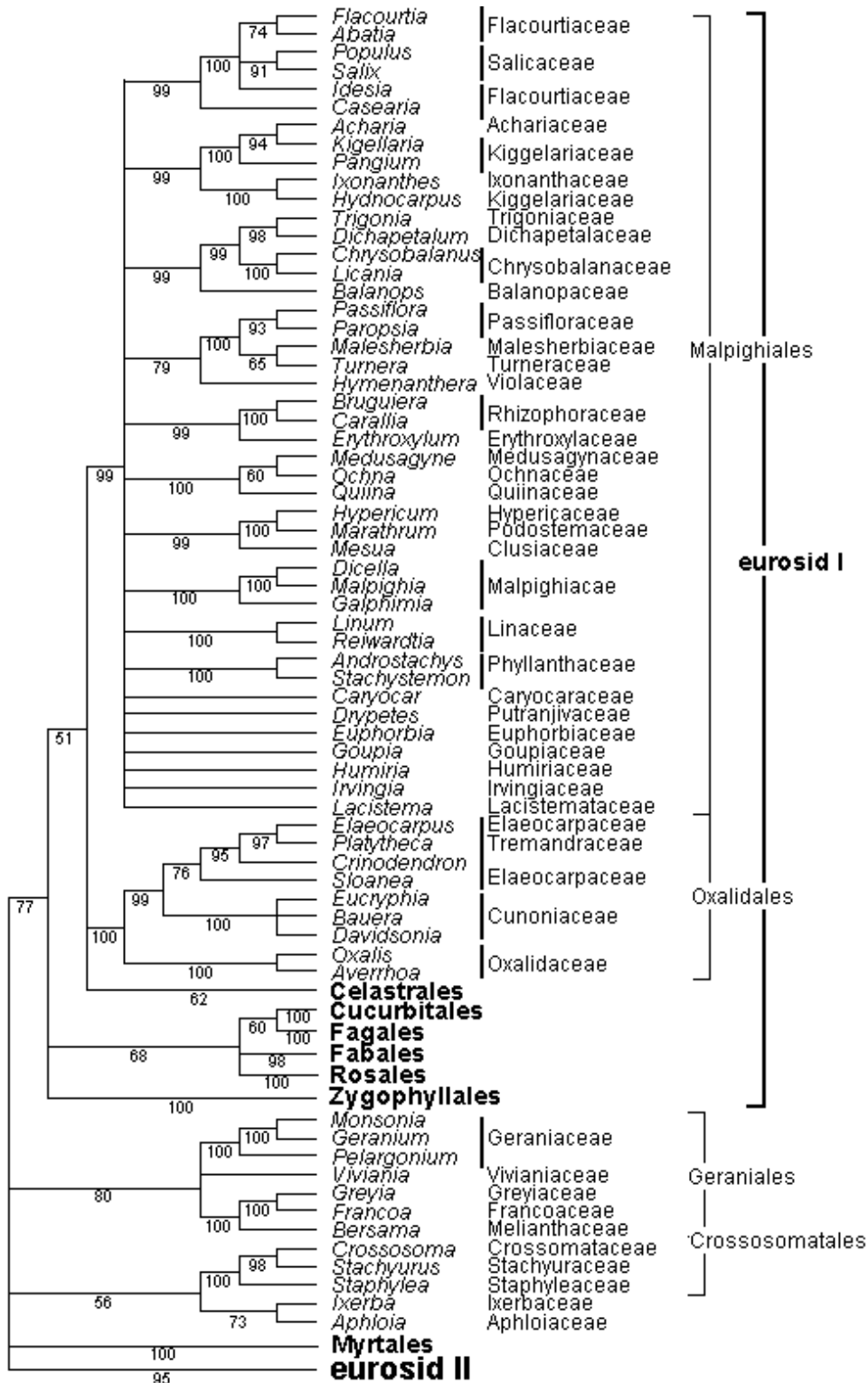


Figure 8. The jackknife consensus tree focusing on a portion of the eurosid I clade plus the unplaced eurosid orders and families. Celastrales, Cucurbitales, Fagales, Fabales, Myrtales, Rosales, and Zygophyllales are each indicated as single terminals. Note that Aphloiaceae and Ixerbaceae are unplaced to order.

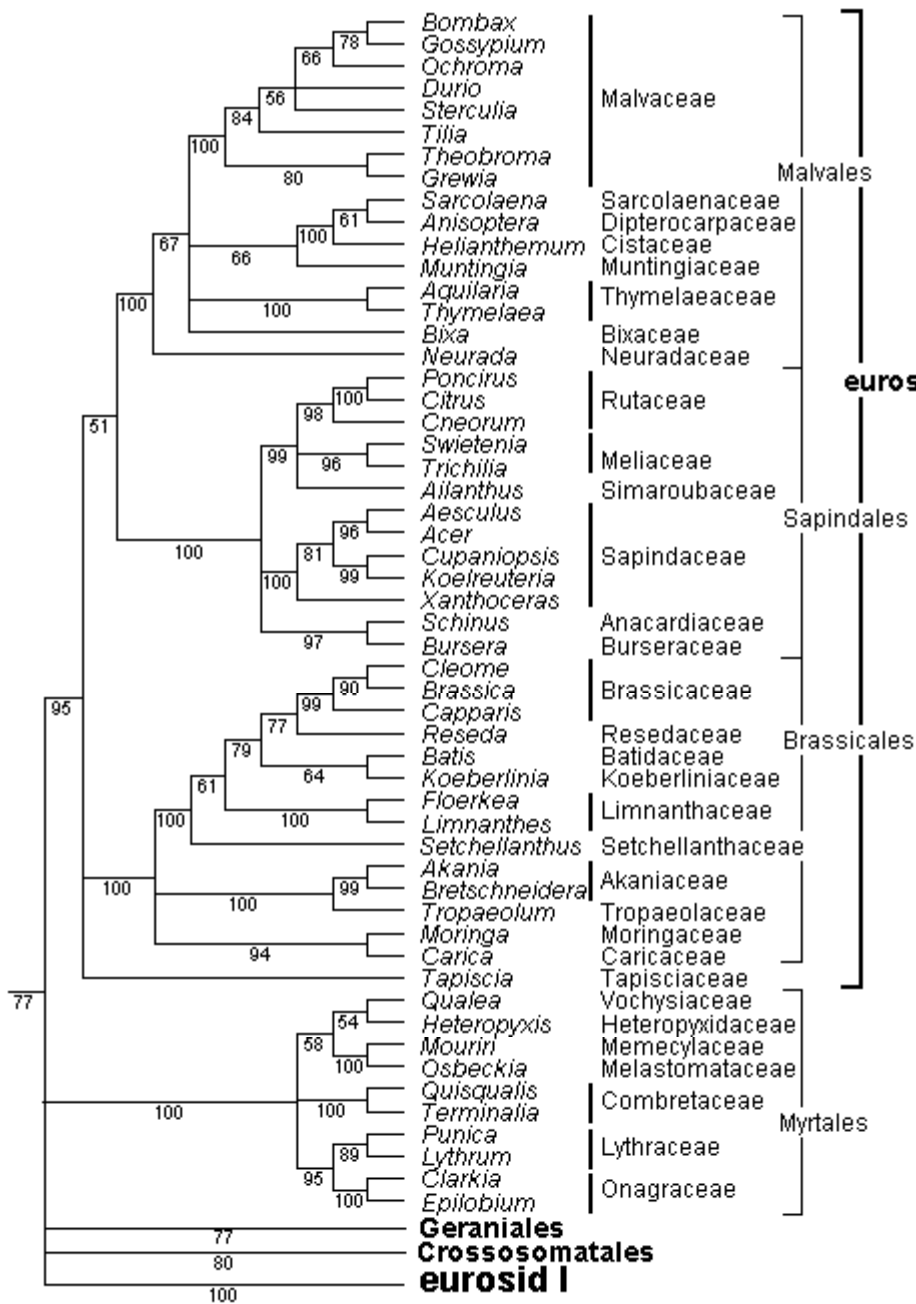


Figure 9. The jackknife consensus tree focusing on the eurosid II clade plus Myrtales. Crossosomatales, eurosid I, and Geraniales are each indicated as single terminals. Note that Tapisciaceae are unplaced to order.

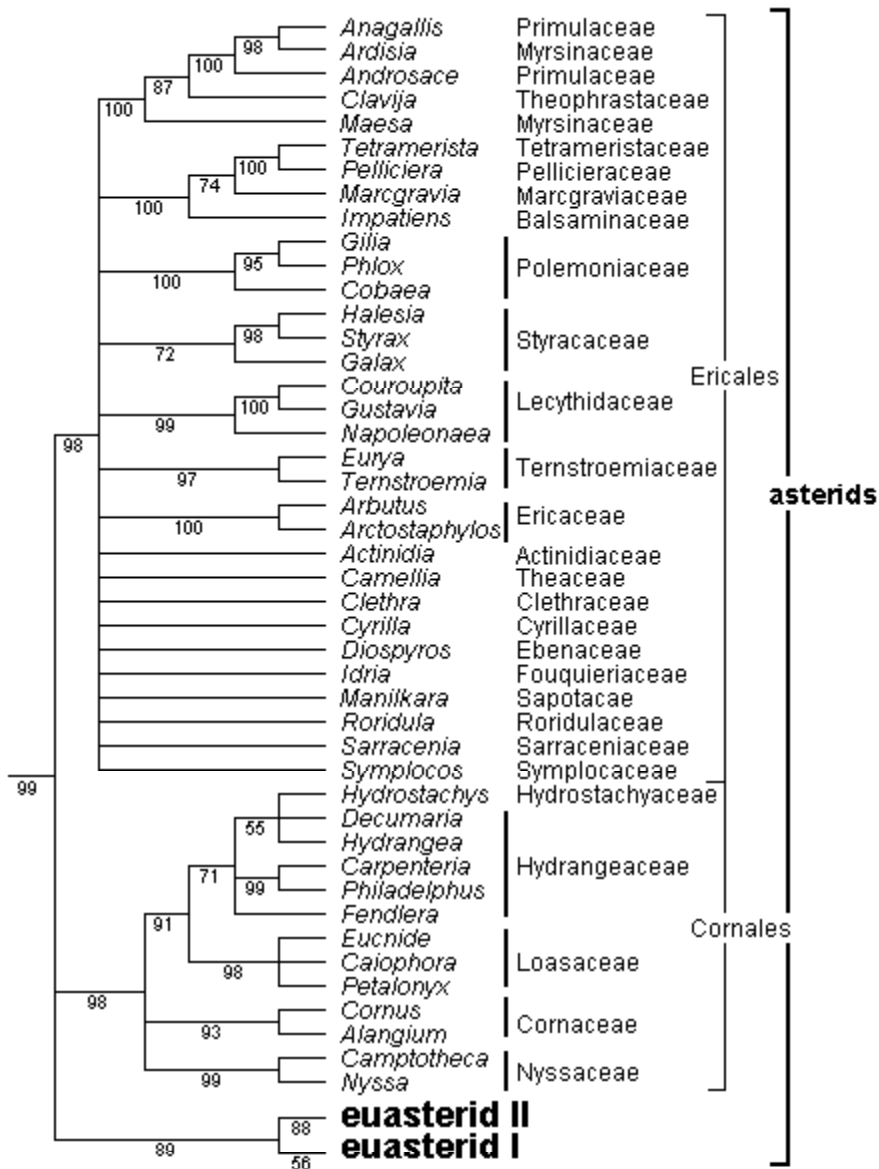


Figure 10. The jackknife consensus tree focusing on the base of the asterids. Note that Cornales and Ericales form sister groups. Euasterid I and II are each indicated as single terminals.

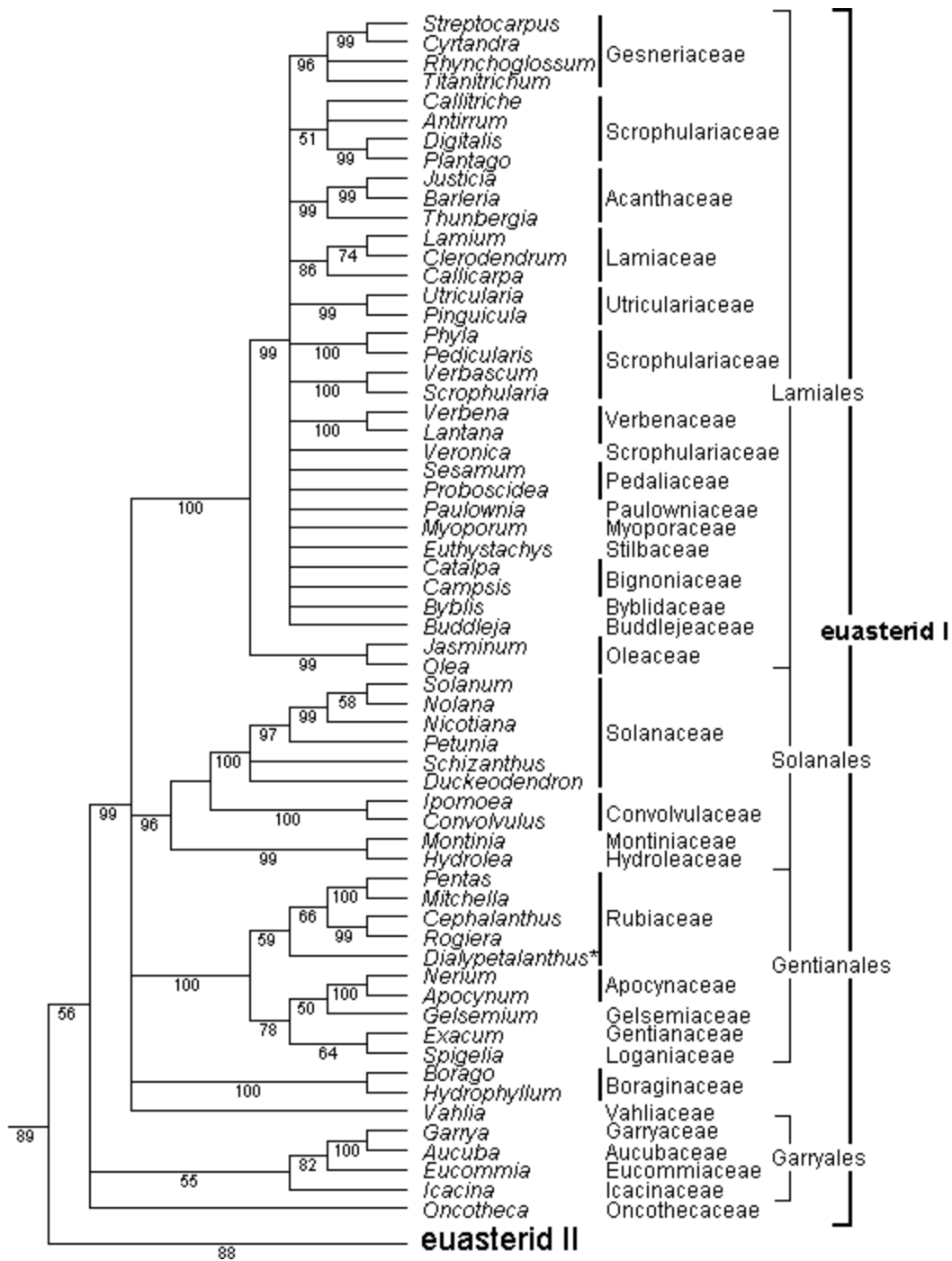


Figure 11. The jackknife consensus tree focusing on the euasterid I clade. Euasterid II are indicated as a single terminal. Note that Boraginaceae, Oncothecaceae, and Vahliaceae are unplaced to order.

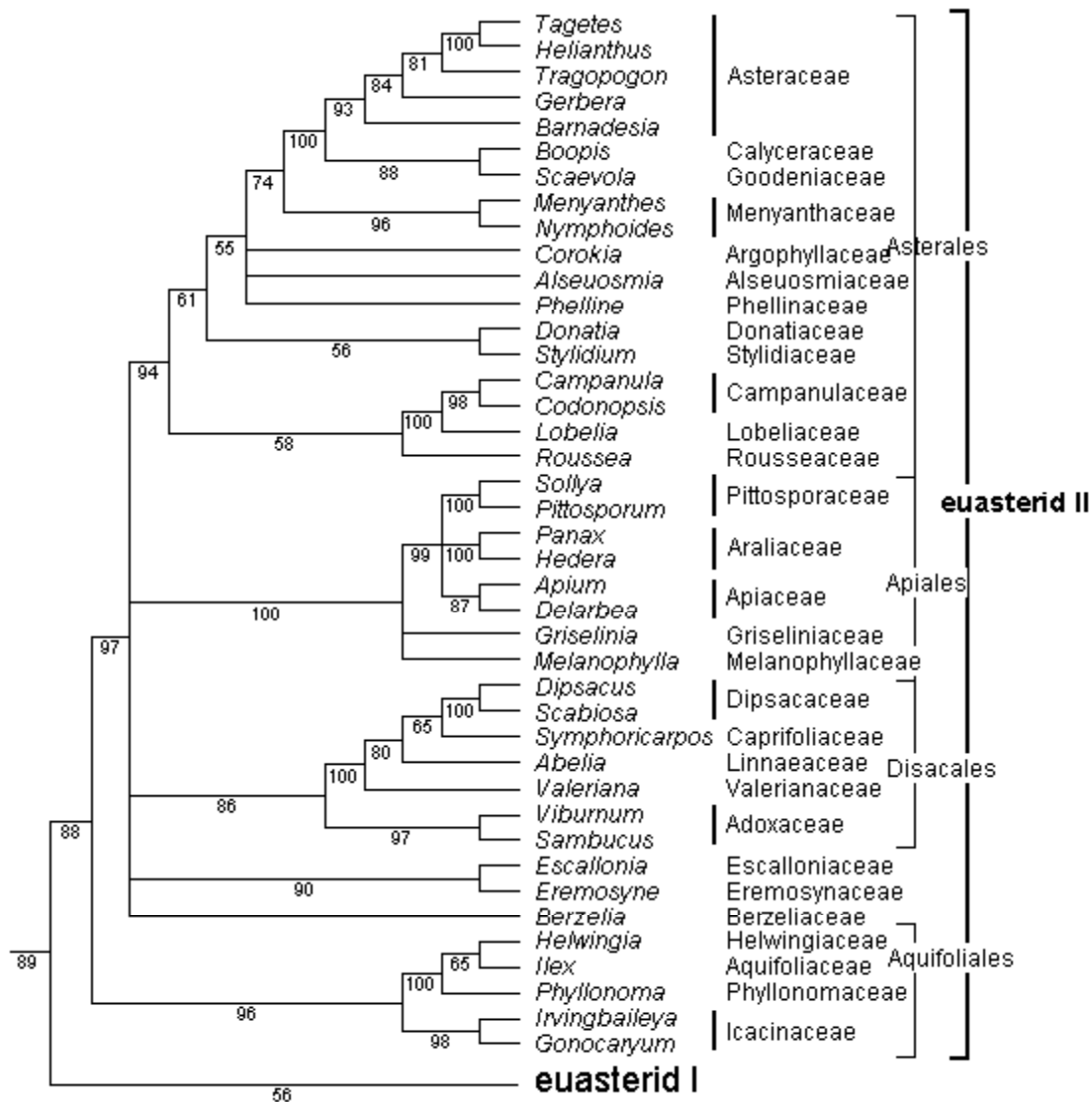


Figure 12. The jackknife consensus tree focusing on the euasterid II clade. Euasterid I are indicated as a single terminal. Note that Bruniaceae, Eremosynaceae, and Escalloniaceae are unplaced to order.

References:

- APG [Angiosperm Phylogeny Group] (1998). An ordinal classification for the families of flowering plants. *Ann. Missouri Bot. Gard.* 85: 531-553.
- Soltis, D.E., Soltis, P.S., Chase, M.W., Mort, M.E., Albach, T.D., Zanis, M., Savolainen, V., Hahn, W.H., Hoot, S.B., Fay, M.F., Axtell, M., Swensen, S.M., Prince, L.M., Kress, W.J., Nixon, K.C., and Farris, J.S. (2000). Angiosperm phylogeny inferred from 18S rDNA, rbcL, and atpB sequences. *Botanical Journal of the Linnean Society*, 133(4): 381-461 (available online at <http://www.idealibrary.com>).