

# FLMNH

FLORIDA MUSEUM OF NATURAL HISTORY

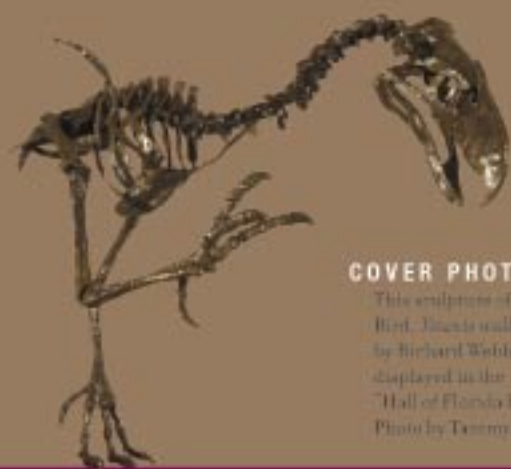


2003-2004

ANNUAL REPORT

# F L M N H

THE FLORIDA MUSEUM OF NATURAL HISTORY  
IS FLORIDA'S STATE MUSEUM OF NATURAL HISTORY,  
DEDICATED TO UNDERSTANDING, PRESERVING AND  
INTERPRETING BIOLOGICAL DIVERSITY AND  
CULTURAL HERITAGE.



#### COVER PHOTO

This sculpture of Terror  
Bird, *Tyrannosaurus*,  
by Richard Wolden is  
displayed in the  
"Hall of Florida Fossils."  
Photo by Tammy Johnson.

#### This report was produced by:

FLORIDA MUSEUM OF NATURAL HISTORY  
Marketing and Public Relations  
PO Box 112710  
Gainesville, FL 32611-2710  
email:pramey@ufl.edu

EDITOR: Paul Ramey, APB  
EDITORIAL ASSISTANT: Kristin Ede  
DESIGNER: Leah Puchinski  
CONTRIBUTING EDITOR:  
Sharon Thomas

CONTRIBUTING WRITERS:  
Betsy Camp, Ph.D.  
Elise LeCompte  
Darcie MacMahon  
Susan Pharr

PRINTING: StorerChilds Printing Co.  
PHOTOGRAPHY:  
Jeff Gage  
Tammy Johnson  
Roger Portell  
John Jernigan  
[www.ronkinballstock.com](http://www.ronkinballstock.com)

# A MESSAGE FROM THE DIRECTOR

None of us at the Florida Museum of Natural History will soon forget 2003-2004. Despite a third straight year of state budget cuts, we experienced one of our busiest and most successful years — a year filled with accomplishments. Let me mention just a few of the highlights.

On September 19<sup>th</sup> the UF Cultural Plaza hosted *Party On The Plaza*, an enormous, gala birthday bash to celebrate UF's sesquicentennial. Over \$1 million was raised for a Cultural Plaza Endowment and we have applied for state matching funds that could increase the total by 50 percent. Income generated from this endowment will be split equally among the Florida Museum and our neighbors, the Phillips Center for the Performing Arts and the Harn Museum of Art, in order to bring the finest in traveling exhibitions and performances from around the world to UF and the north-central Florida community.



In May the last of Powell Hall's permanent exhibition galleries opened to the public. The much-anticipated *Hall of Florida Fossils: Evolution of Life and Land* tells the story of Florida's unique record of ancient life. Its breathtaking design, lighting and workmanship, combined with state-of-the-art scientific content from Florida Museum collections and staff, have set a new standard for such exhibitions. Our audience is very enthusiastic about the Fossil Hall, visiting in record numbers. Since May, several museums have visited to take notes and borrow ideas, paying our Fossil Hall team a huge compliment in the process. We thank Fossil Hall sponsors Barbara & Reed Toomey as well as major donors Jon & Beverly Thompson and AEC Trust, and all of our other contributors who made this marvelous exhibition possible.

Scholarly activity on the collections and research side of the Museum continued to climb this year. A major indicator of productivity, competitive grant and contract funding, reached an all-time high as ichthyologist Dr. Larry Page received the largest research grant ever awarded to a museum researcher. His \$4.7 million, multi-year grant from the National Science Foundation's Planetary Biotic Inventory program, in cooperation with four other institutions, will facilitate the study of catfish systematics around the world by involving more than 250 researchers from 31 countries.

The Museum also hosted two NSF-sponsored workshops involving an international assemblage of scientists. Dr. Page organized the first, *Producing A Decadal Vision for Taxonomy and Natural History Collections*, in December. The second, *A Workshop on Establishing a Comprehensive Database for Plant Systematics*, followed in February and was organized by Drs. Pam and Doug Soltis.

A final and very gratifying highlight of 2003-04 was the launching of *Museum Nights* during the spring semester. *Museum Nights* represents a dynamic partnership between the Florida Museum, the Harn Museum and UF Student Government in which Student Government has funded both museums to remain open Thursday evenings when the university is in session. Special programs, music and refreshments have attracted a devoted and growing audience of students and community visitors to the museums who might not find it possible to visit during normal hours. Promoting greater participation by UF students has been a longtime goal of the Florida Museum and this historic partnership with Student Government has helped both organizations achieve their missions.

As fiscal year 2003-04 drew to a close, it was gratifying to see substantial completion of the McGuire Center for Lepidoptera and Biodiversity, sited on the north and west sides of Powell Hall. Four years in the planning and construction phases, this world-class facility will firmly establish the Florida Museum as the epicenter for butterfly and moth research and education around the world.

Douglas S. Jones, Ph.D. • Director





# COLLECTIONS AND RESEARCH



The 2003-2004 fiscal year was one of unprecedented research and curatorial activities at the Florida Museum. Dickinson Hall is where most of the Museum's more than 21 million objects are housed along with the associated field notes, photographs, databases and libraries that enhance their irreplaceable scientific value.

The Museum's curators and collection managers have more than \$8 million in multi-year grants to support research, collections curation and education. Research at the Museum focuses on studies of DNA, anatomy, ecology, behavior, culture change and evolution of plants, animals and human cultures. While the Museum's primary geographic strengths are in Florida, the southeastern United States and the Caribbean, the collections and research programs span the globe. Most of the collections of plants, animals, fossils and artifacts rank among the top 10 in the United States, if not the world.

## ARCHAEOLOGY AND ETHNOGRAPHY

Distinguished Research Curator Kathleen Deagan received the 2004 J.C. Harrington Award for "distinguished contribution to the discipline grounded in scholarship" from the Society for Historical Archaeology.

Along with Historical Archaeology Collection Manager Alfred Woods, Deagan continued research on Florida's first Spanish settlement in St. Augustine, Columbus' 1492 fortress of La Navidad in Haiti and investigation of Taíno responses to Spanish contact in Hispaniola at En Bas Saline in Haiti. With help from Office of Museum Technology staff, they also developed a web site on archaeology in Haiti.

Deagan and Woods also completed the development of an online, interactive ceramic comparative collection containing more than 40,000 digital photographs of the Florida Museum historical archaeology ceramic-type collections.

Environmental Archaeology Curator Kitty Emery was nominated as the 2004 Scientific Research Society of North America Lecturer. She and Collection Managers Irvy Quitmyer and Sylvia Scudder and Archaeobotanist Donna Ruhl have concentrated on research related to ancient human-environment interactions in the circum-Caribbean basin, in Florida and the Southeast, including human impact on the environment by over-exploitation of terrestrial and marine environments, the socio-economics of natural resource control in complex societies and study of methods in recovery and interpretation of environmental archaeology data.

Collections work included establishing a digital archive of skeletal images of all Maya terrestrial fauna in the Environmental Archaeology collections and upgrading the curation of the wet archaeobotanical collections.

Assistant Scientist Karen Walker focused on the environmental archaeology of the Pineland Surf Clam Ridge. She also curated collections from the Futch Cove Site at the Kennedy Space Center. Along with Ruhl, Walker curated the archaeobotanical collections from Pineland and continued work on a project on the environmental archaeological analysis of the Everglades National Park and curation of collections from the park.

Curator of Caribbean Archaeology William Keegan directed research projects in Jamaica and St. Lucia. The St. Lucia project is the first systematic survey of one of the Windward Islands of the Lesser Antilles. He also helped direct the first archaeological survey of the U.S. Naval Station at Guantanamo Bay, Cuba.

Curator of Florida Archaeology William Marquardt received the University of Florida Research Foundation Professorship Award for distinguished research and scholarship.

Under the supervision of Marquardt and John Worth, coordinator of research programs and services, field research and educational outreach continued at the Museum's Randell Research Center on Pine Island. Marquardt and Walker also wrote a page for the National Park Service web site on the Museum's southwest Florida research.

Florida Archaeology Curator Jerald Milanich received the 2004 Florida Academy of Sciences Medalist Award for outstanding contributions to the promotion of scientific knowledge, the stimulation of interest in the sciences, or the diffusion of scientific knowledge. He also was recently elected to the board of trustees of the Archaeological Institute of America.

Curator of Latin American Art and Archaeology Susan Milbrath was involved in a Mayapan archaeological project involving the analysis of the corpus of ceramic incense burners to identify different patterns of representation and form a typology. Along with help from Museum Registrar Elise LeCompte, Milbrath completed a 500-object database for the Museum's Pearsall Collection of Native American artifacts. Work also continues on an online database of the Latin American archaeological ceramics collection.

Museum Ceramicist Ann Cordell completed investigations of pottery and clay samples from archaeological sites in St. Lucie, Sarasota, Charlotte, Lee and Okaloosa counties. Florida Archaeology Collection Manager Scott Mitchell accepted the position of director of the Silver River Museum in Ocala in June 2004. Diane Kloetzer and Donna Ruhl have been acting Florida Archaeology collection managers since Mitchell's departure. The Florida Archaeological Council honored longtime Anthropology volunteer Thomas Vickery with a 2004 Stewards of Heritage Preservation Award in recognition of his special efforts to support archaeology and historic preservation through his work at the Museum.

## MUSEUM STUDIES

The Museum continues its successful relationship with the University of Florida's Museum Studies Program in the College of Fine Arts. Graduate level interns from the program work with Museum curators and collection managers on projects related to collections curation, exhibits and museum administration. Several Museum curators, such as Charlotte Porter, and collections staff, such as Elise LeCompte, also teach courses and classes related to museum theory and collections management for the program.

Porter completed work on the development of the Bartram Trail Conference. She started a research project with the UF Museum Studies students to locate artifacts made from deerskins obtained by the British from the Creek and Seminole of Florida. She also is developing a CD-ROM on William Bartram.

## VERTEBRATE ZOOLOGY

### Ichthyology

Assistant Scientist William Crampton and Assistant Curator James Albert completed a faunal inventory of the Peruvian Amazon floodplain and studied the evolution of electric signaling in gymnotiform fishes. This project included study of the systematics, phylogeny and biogeography of these fishes, as well as the development of software for analysis of electric signals of fish. Crampton was involved with a 2003 National Geographic film on electric eels. Collection Manager Rob Robins worked with ichthyologist Larry Page on the *All Catfish Species Inventory*, a \$4.7 million grant the National Science Foundation awarded to the Florida Museum.

*The International Shark Attack File staff continues to investigate shark attacks, determine trends and consult internationally...*

The Florida Program for Shark Research staff, including George H. Burgess, director, Franklin Snelson, visiting scientist, and Cathy Bester, education coordinator, had a very active year. Among the new and continuing projects underway are five studies determining the ages and growth rates of tiger, basking and hammerhead sharks, investigations examining the reproductive biology of 10 shark and stingray species, dietary studies of sharks and rays, development of fishery management measures for protected dusky sharks and the documentation of movement patterns of bull sharks in Florida and reef-associated sharks in Belize.

The International Shark Attack File staff continues to investigate shark attacks, determine trends and consult internationally on reducing the threat of shark attack.

### Herpetology

Curator Wayne King surveyed exotic herps that have been introduced into Florida and attempted to develop an index to predict which exotic reptiles and amphibians released in the state will not become established, which will

become established in local populations only, and which will become widespread invasive pests. He also collaborated with Charlotte Porter on documentation of wildlife exploitation and trade at the time of William Bartram's visits to Florida.

Curator Max Nickerson pursued research on the effects of flooding and harvesting on various populations of hellbender salamanders. He also carried out studies on chelonian populations and on venom glands in snakes.

Associate Scientist Richard Franz worked on new species of fossil tortoises from the Caribbean, South Carolina and Florida, while continuing to research fossil tortoises in Nebraska. The Florida Gopher Tortoise Council honored Franz through its establishment of the Auffenberg and Franz Conservation Award.

Collection Manager Kenneth Krysko headed a multi-agency team that researched four newly introduced species to Florida and the impact these species will have on native Florida ecosystems. Krysko and museum scientist Kurt Auffenberg discovered a new angular-toed gecko from Pakistan. Auffenberg also researched land snails in Pakistan and the Philippines. All Herpetology curators and staff expanded the herpetology publications on the Florida Museum web site by more than 300 pages.

### Mammalogy

Assistant Curator David Reed conducted research on the genetic analysis of lice and the support for direct contact between modern and Archaic humans. He also initiated the BioCorder Project ([www.flmnh.ufl.edu/biocorder](http://www.flmnh.ufl.edu/biocorder)). This web-driven database will track specimen data and products derived from those specimens such as DNA sequences, morphological data, images, datasets and publications. Collection Managers Laurie Wilkins and Candace McCaffery continue the division's research on the endangered Florida panther, thanks to support from the Florida Fish and Wildlife Conservation Commission. Wilkins also oversaw installation of the Museum's *Images of the Maya* exhibition, which she designed and curated.

### Ornithology

Curator David Steadman conducted research on the paleontology, biogeography, evolution, systematics and community ecology of birds on tropical islands and changes in bird communities in the Neotropics.

Steadman also worked on the higher-level phylogeny of birds as revealed by the Cenozoic fossil record. This project includes study of fossil birds from the Thomas Farm site in Gilchrist County, Fla. A 2003 BBC film featuring Steadman won the Carl von Linne Science Trophy at the Living Europe Film Festival in Sweden.

Collection Managers Andrew Kratter and Tom Webber continued to curate new additions to the collections, including skins salvaged from rehab clinics throughout Florida. Steadman, Kratter and Webber gained biological knowledge of Florida's birdlife through specimen salvage at wildlife rehabilitation clinics in conjunction with the Florida Fish and Wildlife Conservation Commission. Along with Steadman, Kratter surveyed and collected birds on Espiritu Santo in the South Pacific.

### The Katharine Ordway Nature Preserve

The Museum welcomed Ordway Eminent Scholar of Ecosystem Conservation Scott Robinson from the University of Illinois. His research focuses on the nesting success and populations of birds of the Ordway Preserve, including the effects of urbanization on community composition.



## INVERTEBRATE ZOOLOGY

### Malacology

Associate Curator Gustav Paulay researched the marine biodiversity inventory of Oceania, the molecular phylogeography of Indo-West Pacific mollusks and systematics and biogeography of tropical Indo-West Pacific marine invertebrates.

Curator Fred Thompson researched Mexican land snails and freshwater snails in Florida. Thompson also surveyed molluscan biodiversity in Honduras, Chihuahua and Veracruz.

Collection Manager John Slapcinsky studied new species of invertebrates in Papua New Guinea, researched introduction of exotic species to North America, and, along with Invertebrate Paleontology Collection Manager Roger Portell and Anthropology Curator Bill Keegan, studied changes in invertebrate taxa from prehistoric sites in Jamaica.

Paulay, Thompson and Slapcinsky started a project to computerize all newly acquired tropical and subtropical mollusk collections at the Museum.



## BOTANY

### Herbarium

Curator Norris Williams and Laboratory Director Mark Whitten researched the molecular systematics and biogeography of several orchid families by focusing on DNA sequence data. They also researched the molecular phylogenetics of certain orchids. Williams received the first Lankester Prize from the University of Costa Rica for pioneering work on the ecology, evolution, phylogeny and systematics of orchids.

Collection Manager Kent Perkins initiated a cooperative program between the Herbarium and Kanapaha Botanical Gardens to conduct a floristic inventory of the gardens. The project seeks to document the native, naturalized and cultivated vascular plants in the gardens. Data and specimen images collected as part of this project are available online, [www.flmnh.ufl.edu/herbarium/kanap/](http://www.flmnh.ufl.edu/herbarium/kanap/). Perkins also is working with the University of Florida Libraries Digital Library Center on Herbarium web site improvements to aid users with plant recognition and identification questions.

### Molecular Systematics and Evolutionary Genetics Laboratory

Curator Pam Soltis and Adjunct Curator Doug Soltis researched questions of angiosperm phylogeny, patterns and genetics of floral evolution and patterns and processes of gene and genome evolution.

Specific projects include the development of a comprehensive phylogenetic tree of living and fossil angiosperms, research on the origin and evolution of the floral genetic program and phylogenetic tools for evolutionary and functional genomics of angiosperms, as well as development of the *Tree of Life* database (a digital library of biodiversity information) and establishment of a comprehensive database for plant systematics.

Assistant Scientist Matt Gitzendanner researched the genetic diversity and self-incompatibility locus characterization of the

Florida jujube and developed microsatellite loci for genetic analysis for Lewton's milkwort and Avon Park harebells.

### Paleobotany

Graduate Research Professor David L. Dilcher and Museum Biologist Terry A. Lott researched fossils from Alabama, Brazil, China, Costa Rica and Tennessee and created a database for early angiosperms of the world and morphotypes of Eocene fossils of Tennessee.

With major help from Graduate Research Assistant Shusheng Hu, they also conducted pollen counts of northeastern Florida. Dilcher and Beth Kowalski worked on leaf physiognomy and climate of the eastern U.S. The lab also participated in field research on the Cretaceous of Minnesota, Eocene of Tennessee and Miocene of Alum Bluff, Fla. Curator Steve Manchester researched the Eocene floras of western North America, the anatomy of specific fossil plant families from the Paleocene and Cretaceous and the systematics and fossil history of Vitaceae.

Research Associate David Jarzen returned to the Museum and researched Florida and the southeastern U.S. palynofloras from Tertiary and Quaternary deposits and lake cores. He continued to work with colleagues in Australia on Proteaceae and other Gondwana taxa. He also curated and catalogued the modern pollen and spore reference collection and fossil palynofloral localities into a database.

Collection Manager Hongshan Wang continues his research on Cretaceous Dakota Flora of the Western Interior. His research focuses on the diversity of angiosperms during the mid-Cretaceous and the comparisons between the Dakota flora and other coeval floras of North America. Graduate Research Assistant Xin Wang researched the effects of lightning in preserving cytoplasm in plants that then become fossils.



PALEONTOLOGY

Invertebrate Paleontology

Collection Manager Roger Portell conducted fieldwork at several quarries in St. Lucie County where unique species of sand dollars, sea urchins and sea biscuits were discovered in shell beds approximately 120,000 years old. Many new fossil species were collected as part of the Florida Geological Survey State Map Program. Portell, along with colleagues in the Netherlands and Jamaica, began National Geographic Society-funded research documenting fossils from a rare 2 million-year-old raised reef on the north coast of Jamaica. Thus far, more than 60 species of marine snails and clams have been identified along with four new crab species.

*“Thus far, more than 60 species of marine snails and clams have been identified along with four new crab species.”*

Museum Facilities Manager and Research Assistant George Hecht conducted fieldwork and curated the division’s microfossil and teaching collections and library.

Vertebrate Paleontology

Assistant Curator Jonathan Bloch joined the Museum. His research focuses on the early evolution of primates, bats and insectivores.

Distinguished Research Curator Emeritus David Webb collected Miocene vertebrates at sites in southwestern Montana. Collection Manager Richard Hulbert and Research Scientist Art Poyer continued fieldwork at Thomas Farm. Preparator Russell McCarty worked on fossils from the Thomas Farm excavations and ran a workshop on mold making and casting techniques.



RESEARCH LOCATIONS

Florida

- Alachua
- Bay
- Brevard
- Broward
- Calhoun
- Charlotte
- Collier
- Dade
- De Soto
- Franklin
- Gilchrist
- Hendry
- Highlands
- Lafayette
- Lee
- Leon
- Levy
- Liberty
- Manatee
- Marion
- Monroe
- Okaloosa
- Palm Beach
- Polk
- St. Johns
- St. Lucie
- Sarasota
- Suwannee

States

- Alabama
- Arizona
- Arkansas
- Colorado
- Georgia
- Montana
- Nebraska
- New Mexico
- Oregon
- South Carolina
- Tennessee
- Texas
- Utah
- Washington, D.C.
- Wyoming

International

- |                           |                      |                   |
|---------------------------|----------------------|-------------------|
| Bahamas                   | Guatemala            | Papua New Guinea  |
| Bolivia                   | Haiti                | Peru              |
| Brazil                    | India                | Philippines       |
| Chile                     | Jamaica              | St. Lucia         |
| Central and South America | Malaysia             | Trinidad & Tobago |
| China                     | Mexico               | Turks & Caicos    |
| Cuba                      | Netherlands          | Islands           |
| Dominican Republic        | Netherlands Antilles | Vanuatu           |
| Ecuador                   | Oman                 | Venezuela         |
| France                    | Pakistan             |                   |
| Guam                      | Panama               |                   |

TEACHING

- ANG 4950 Internship in Museum Curation, 3 credits
- ANG 6930 Caribbean Field School, 3 credits
- ANG 6930 Lessons from Ancient Environments, 3 credits
- ANG 6930 Maya Archaeoastronomy and Ethnoastronomy, 3 credits
- ANT 4905 Internship in Museum Curation, 3 credits
- ANT 4907 Research Project in Social/Cultural Anthropology, 3 credits
- ANT 6905 Internship in Museum Curation, 2 credits
- ARH 6946 Museum Practicum, 3 credits
- BOT 2710 Practical Plant Taxonomy, 3 credits
- BOT 5725 Plant Taxonomy, 4 credits
- BOT 6935 Special Topics: Population Genetics, 2 credits
- IDH 3931 Artists and the Florida Environments, 3 credits
- WIS 4945C Wildlife Techniques, 2 credits
- ZOO 2203C Invertebrate Zoology, 4 credits
- ZOO 6927 Avian Anatomy and Specimen Preparation, 4 credits
- ZOO 6927 Invertebrate Zoology, 4 credits

GRADUATE COMMITTEES SERVED: 111  
GRADUATE COMMITTEES CHAIRED: 50  
INDEPENDENT STUDIES: 85

NEW GRANTS & CONTRACTS

Florida Museum faculty and staff received 28 new grants totaling more than \$1.8 million from the following agencies:

- Administration for Children & Families
- All Species Foundation
- American Association for Advancement of Science
- American Orchid Society Fund
- American Ornithologists Union
- Department of Agriculture & Consumer Services
- Florida Department of State
- Evolving Earth Foundation
- Florida Fish & Wildlife Conservation Commission
- Foundation for Advancement of Mesoamerican Studies
- Institute of Museum & Library Services
- National Science Foundation
- St. Louis Zoological Park
- State University of New York
- University of Guam
- U.S. Department of Agriculture
- U.S. Department of Commerce
- U.S. Department of the Interior

# EXHIBITS AND PUBLIC PROGRAMS



## AWARDS

The Southeastern Museums Conference awarded its "2003 Award of Excellence" to *South Florida People and Environments*, the Museum's permanent exhibition hall that opened in 2002.

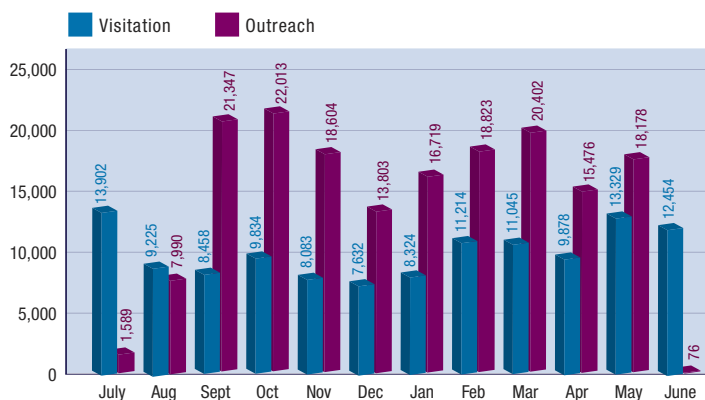
This prestigious peer-juried award recognizes the finest new exhibition in the southeastern states with a budget of more than \$1 million.

## VISITATION AND OUTREACH

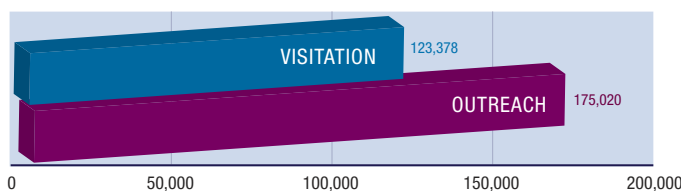
With more than 123,000 visitors, Museum attendance increased just over 4 percent from the last fiscal year. The Museum's various outreach programs reached 175,020 people, representing a 20 percent increase over last year.

### VISITATION AND OUTREACH

2003 - 2004



### TOTAL VISITATION AND OUTREACH





## TEMPORARY EXHIBITIONS



The Changing Exhibits Gallery hosted *The Everglades: Exploitation and Conservation* from the Historical Museum of Southern Florida in Miami; *Hunters of the Sky* from the Science Museum of Minnesota; and the Florida Museum's own exhibition *Images of the Maya*, which features Maya textiles and photographs and included a week-long visit from Mayan weavers.

Planning also continued for future shows, including the nationally renowned blockbuster *Chocolate: The Exhibition* from the Field Museum scheduled for fall 2004.

In the Galleria, the Museum hosted the photographic exhibit *Gamba: The Edge of Africa*, a painting and specimen exhibit titled *Micro Minerals*, and watercolors of native plants in *Flora of La Florida*. These smaller exhibits provide the opportunity to feature the works of artists and scientists exploring interesting natural history topics.

Other temporary exhibitions included the seventh annual *Trashformations* art show. Sponsored by the Alachua County Office of Waste Alternatives, this show highlights high school and college student art made from recycled material. Additionally, in conjunction with the Alachua County Public Schools Visual Arts Program, the Museum featured artwork created by elementary students to complement the *Hunters of the Sky* and *Hall of Florida Fossils: Evolution of Life and Land* exhibits.



## PERMANENT EXHIBITIONS

### Hall of Florida Fossils

The Museum's third permanent exhibition, the *Hall of Florida Fossils: Evolution of Life and Land*, opened May 22, 2004. This 5,000-square-foot exhibition draws upon the Museum's internationally acclaimed fossil collections and has already become a visitor favorite, boosting attendance figures and garnering nationwide publicity.

Initial designs, by well-known designer Ralph Appelbaum and Associates of New York, were taken to completion by Florida architects VOA Associates, Museum staff and many talented national artists. This hall was made possible through the generosity of Reed & Barbara Toomey, Jon and Beverly Thompson, AEC Charitable Trust, Stephen and Rena Jacobson, Cliff and Pat Jeremiah, and Roger and Anne Portell, with matching funds provided by the state's Alec P. Courtelis Facilities Enhancement Challenge Grant program.

The exhibit describes the last 65 million years of Florida's history. Over the last 40 years, Museum scientists have contributed a great deal to our understanding of the geology and paleontology of the Americas, particularly Florida. The exhibit brings this science to life with a walk through time, starting in the Eocene, when Florida was underwater, and traveling through the geological epochs to the arrival of humans in the Pleistocene. Florida's first land animals and the 3-million-year-old land bridge between North and South America provide an exciting environment to view numerous reconstructed skeletons, including a 15-foot-tall ground sloth and a 2-foot-tall horse. More than 90 percent of the 500 fossils are real and many were found within 100 miles of Gainesville. Hands-on bronze animal sculptures and 3-dimensional globes add interactivity and dimension for the unsighted.

The Saturday public opening included lectures by visiting paleontologists such as Jack Horner and Chris Brochu, guided tours, book signings, temporary tattoos, shark tooth giveaways, "Stump the Paleontologist," information from Florida Fossil Clubs and a larger-than-life-sized giant shark for visitors to paint.

## McGUIRE CENTER FOR LEPIDOPTERA AND BIODIVERSITY

Construction of the new McGuire Center for Lepidoptera and Biodiversity was nearly completed and occupation initiated, with an opening date set for August 2004. The Museum moved its collection of 1.2 million specimens, 12,000 drawers, compactors, library, furniture and equipment from the Allyn Museum of Entomology in Sarasota to Gainesville. The Museum also moved more than 1 million specimens from other UF collections into the McGuire Center.

### Other McGuire activities include:

- Construction and delivery of more than 10,500 new specimen drawers
- Planting of the 6,400-square-foot screened Butterfly Rainforest with 2,000 plants
- Moving the highly successful captive propagation project of the endangered Miami Blue butterfly into new laboratory facilities
- Phase I installation of exhibits in the public galleries





## PUBLIC PROGRAMS

### Programs for Students

More than 27,600 pre-K through 12<sup>th</sup>-grade students participated in Museum education programs, and docents led more than 8,500 students on tours of permanent and temporary exhibits. *Sky Hunters* and *Cave Crawlers* and *Florida Treasure Hunters* were developed as new programs for preschool and kindergarten children.

Museum docents made *Inquiry Box* outreach presentations for more than 18,300 students in six counties. These object- and activity-rich programs feature five different topics and include a collection of objects and teacher guide with participatory lessons and activities.

The fall *Homeschool Activity Mornings* featured a variety of activities such as owl pellet dissections, and *Home School Nature Series* classes included *Beak, Feet & Feathers*, *Bird Watching for Beginners*, *Pond Ecology* and *Hooray for Herps*.

More than 800 seventh-graders from 10 schools attended *Sensational Science*, a program with interactive displays by 30 community and University of Florida presenters highlighting the role science plays in a variety of careers and daily life.

### Teacher and Adult Education

The Florida Museum and Samuel P. Harn Museum of Art collaborated with Alachua County Schools on the Educators Open House, which features the educational resources of the UF Cultural Plaza museums and community agencies.

More than 50 students participated in a variety of spring classes, including *Dye Naturally*, *Pre-Columbian Food & Fibers*, and *Wild Toxics, Medicinals & Edibles*.

Seventeen students completed the Florida Master Naturalist Coastal Module class, attending 40 hours of instruction and discovering Florida's natural heritage in the beaches and estuaries as they learned to understand and appreciate the state's coastal habitats and wildlife that depend on these delicate ecosystems.

### Classes

Nearly 800 spaces were filled in children's classes during 2003-2004. One-day classes encouraged students to explore the world of owls, the amazing continent of Africa, or the outdoors to search for signs of spring, and then turn their observations into art. During one week of classes, students had an opportunity to converse with Maya weavers who visited the Museum during the *Images of the Maya* exhibit. Other summer class topics included photography, buried treasures and the world of archaeologists, tropical ecosystems, natural habitats of Florida, insect expeditions, fossil creatures, extinct and endangered species, kitchen chemistry and geology.

### Public Events

Providing something for practically everyone, the Museum's public programs include annual events such as *Bats*, *Bats and More Bats*, *Science Spooktacular* and *Animal Fair*. The 25<sup>th</sup> Annual Collectors Day featured diverse collections from Barbie dolls to souvenir spoons, old tools to antique glass figural bottles and railroad lanterns to antique and classic vehicles.

Annual programs also included the *July Summer Programs* for families, focusing this year on weaving, estuaries, plants and museum collections, and *Buchholz BioTrek*, a monthly program where 10<sup>th</sup>-grade biology students from Buchholz High School share animals from their classroom zoo with Museum visitors.

Hundreds of participants of all ages viewed Saturn, Jupiter, Mars at its closest, Venus in transit, and a lunar eclipse through telescopes provided by the Alachua Astronomy Club as part of the *Celestial Celebrations* special events.

## LECTURES

*Why Crocodiles Are Better Than Dinosaurs*  
Chris Brochu, University of Iowa

*Dinosaurs and the Less Interesting Vertebrates That Came After Them*  
Jack Horner, Museum of the Rockies  
(Montana State University)

*A Birder Looks at Butterflies*  
Kenn Kaufman, author of the Kaufman Focus Guide

*The Crested Caracara*  
James Layne, Archbold Biological Station  
(Lake Placid, Fla.)

*Birds Eye View of the Swallow-tailed Kite*  
Ken Meyer, Director, Avian Research and Conservation Institute (Gainesville, Fla.) and Courtesy Associate Professor, Department of Wildlife Ecology and Conservation

*Natural Gardens of North Florida*  
Gil Nelson, author of *Florida's Best Native Landscape Plants*

## OUTREACH PROJECTS

*SEEK: Science and Engineering Experiences for Knowledge*, an after-school program at Howard Bishop Middle School the past two years, was expanded to include Lincoln Middle School. A collaborative program of the Florida Museum, UF College of Engineering, Alachua County Public Schools and Gainesville Regional Utilities with funding from the National Science Foundation, *SEEK* engages students in inquiry-based activities to promote interest and achievement in science, technology, engineering, and mathematics.

*M E S S : M a r v e l o u s Explorations through Science and Stories* is a science curriculum in place in all Alachua County Head Start classrooms. Formed in 2001 as an innovative partnership between the Florida Museum, Alachua County Library District/Youth Services, and Alachua County Public Schools Head Start/Pre-K, the program provides a literature-based science program for more than 850 low-income, pre-school children enrolled in Head Start. Funding has been provided in part by the Institute of Museum and Library Services and ChevronTexaco Foundation. The goals of the program are to foster children's language development, literacy skills, love of reading, curiosity and interest in science by increasing the amount and quality of time children are engaged in science in the classroom and at home.







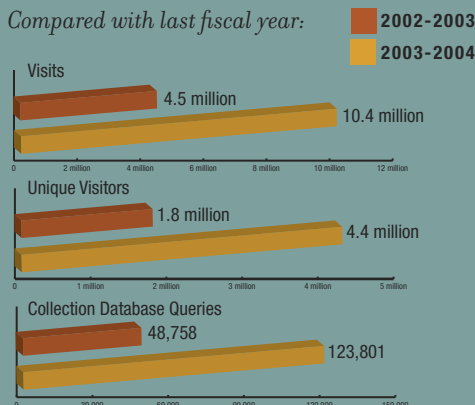
## VOLUNTEERS

Docents participate in training programs that include background information about the Museum's permanent and temporary exhibits as well as effective techniques for engaging students in learning through objects and exhibits.

- More than 370 individuals volunteered a total of 20,144 hours.
- Nearly 80 docents were active during the 2003-2004 school year.
- 40 docents provided assistance with *Sensational Science*.
- Three docents attended the National Docent Symposium in Chicago
- Docent Annette Perry was elected to the National Docent Board.

## OFFICE OF MUSEUM TECHNOLOGY

Florida Museum web visits continue to climb  
Compared with last fiscal year:



Office of Museum Technology staff participated in several grants, contributing to proposals and receiving \$17,500.

Staff members have been actively involved with the McGuire Center construction project, serving as advisors to ensure compliance with University of Florida standards.

Staff received \$8,500 from consulting activities.

OMT staff completed 2,486 help desk requests.

Staff completed many various database and web projects for programs and divisions throughout the Museum.

## NEW EXTERNAL FUNDING

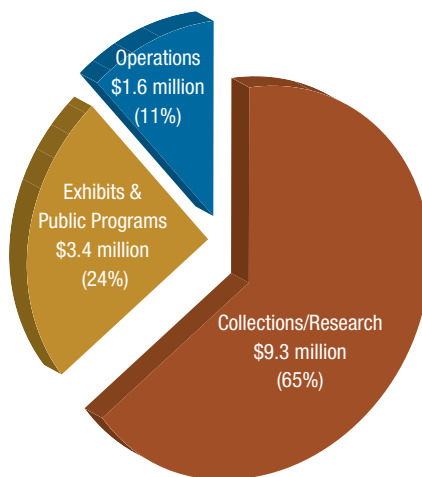
- General Program Support grant for \$78,536 from the State of Florida, Department of State, Division of Cultural Affairs and the Florida Arts Council, and the National Endowment for the Arts. This grant provided support for education and outreach programs.
- 2003 Learning Opportunities Grant award for \$150,000 from the Institute of Museum and Library Services. IMLS received 934 applications and selected 169 projects to receive funding. This grant provides funding to continue implementation of *MESS* in Alachua County Head Start classrooms.
- Funding for *Enhancing Natural History Museum Visitor Understanding of Evolution* is provided in part by the National Science Foundation through a grant of nearly \$145,000. The project research partners collected data at six natural history museums across the country, interviewing 800 visitors to assess their understanding of key concepts of evolution and the nature of science. In addition to the Florida Museum, research partner institutions included the Institute for Learning Innovation, which interviewed visitors at the National Museum of Natural History, the Natural History Museum of Los Angeles County and George C. Page Museum, Denver Museum of Nature and Science and the University of Kansas Natural History Museum and Biodiversity Research Center. Fall 2004 conference attendees will examine the study findings and develop recommendations for ways museums can enhance visitor understanding of evolution through exhibits and programs.



# ANNUAL BUDGET

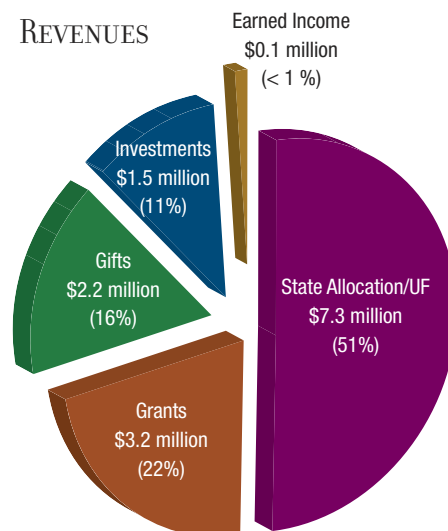
FY 2003-2004

### EXPENDITURES



Total Expenditures: \$14.3 million

### REVENUES

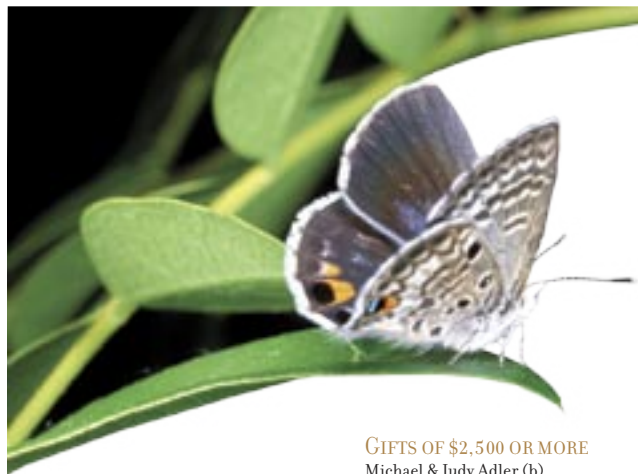


Total Revenues: \$14.3 million



# HONOR ROLL

2003-2004



## GIFTS OF \$1,000,000 OR MORE

William W. & Nadine M. McGuire Family Fdn.

## GIFTS OF \$50,000 OR MORE

ChevronTexaco Foundation  
Mr. & Mrs. Dwight D. Sippelle  
Jon L. & Beverly A. Thompson (fs)

## GIFTS OF \$25,000 OR MORE

Disney Wildlife Conservation Fund  
Maple Hill Foundation  
Shands at the University of Florida (fs) (b)

## GIFTS OF \$10,000 OR MORE

Bonita Bay Group  
Gladys G. Cofrin (ms) (b)  
Louise H. Courtelis (fs) (ms)  
Mr. & Mrs. Robert C. Dorion  
Elizabeth Ordway Dunn Foundation, Inc.  
John W. & Peggy B. Kirkpatrick (\*) (fs) (ms)  
Kenneth R. & Linda C. McGurn (fs) (b)  
Museum Collectors Shop, Inc. (\*) (cs) (b)  
Penniman Foundation Charitable Trust  
Susan P. & Paul A. Robell (\*) (ms) (b)  
F.A.O. Schwarz Family Foundation  
Smith Barney Citigroup (b)  
Mr. & Mrs. James K. Toomey (fs)  
Wachovia (b)

## GIFTS OF \$5,000 OR MORE

Cesar Alvarez (b)  
Mr. & Mrs. Edward J. Amsler  
Lewis & Cindy Brown (b)  
Fred & Carol Bullard (b)  
Francis & Miranda Childress Fdn., Inc.  
Conservation Properties, Inc.  
Kiki Courtelis (b)  
Estate of Pan Thomas Courtelis (d) (fs)  
Meredith Anne Dasburg Foundation (b)  
Jerry W. & Judith S. Davis (b)  
Gary Gerson (b)  
Ben Hill Griffin, Inc. (b)  
Harrell & Johnson, P.A.  
The Robert Wood Johnson Foundation  
Northern Trust Bank of Florida (b)  
Cynthia F. O'Connell (b)  
Susan Palmer & Andrew Palmer (ms)  
Charles Perry Construction, Inc. (b)  
P.P.I. Construction Management (b)  
S. Daniel & Nancy Ponce (b)  
Earl & Christy Powell (b)  
W. Crit & Dee Ann Smith (b)  
Mr. & Mrs. George M. Steinbrenner (b)  
WebMD Medical Manager (b)  
Mr. & Mrs. Robert A. Wells, Jr.  
Mr. & Mrs. John G. Wood  
Vam & E.T. York (b)

## GIFTS OF \$2,500 OR MORE

Michael & Judy Adler (b)  
School Board of Alachua County  
ARAMARK-Educational Services (b)  
BearingPoint (b)  
Clark L. Beaty (cs) (b)  
Alyce B. Boyd (ms)  
Burns Brothers, Inc. (fs) (ms) (b)  
Leighton E. (d) & Beth A. Cluff (b)  
Nathan Collier (b)  
Charles V. & Elizabeth B. Covell (\*) (ms)  
Mashall & Paula Criser (ms) (b)  
Allen (d) & Lou Delaney (b)  
Sheila K. Dickison (ms)  
Thomas C. Emmel (ms) (b)  
Florida Institute of CPAs (b)  
Follet Higher Education Group (b)  
Leonard T. & Elizabeth T. Furlow (fs) (ms) (b)  
Harrell & Johnson P.A. (b)  
Douglas S. & Sheila H. Jones (\*) (cs) (fs) (ms) (b)  
Kha Le-Huu & Partners (b)  
Korge & Korge (b)  
David Lawrence, Jr. (b)  
Martin Z. Margulies (b)  
William H. Marquardt (\*)  
Luis Masa  
Lee D. & Jacqueline Y. Miller (fs)  
NY Times Regional Newspaper Group (b)  
Al & Vanda O'Neill, Jr. (b)  
Whit & Diane Palmer (b)  
PeopleSoft USA (b)  
Powell Family Foundation (b)  
Davis & Judi Rembert (b)  
Jay & Charly Rossin (b)  
Roberto & Maria Elena Sanchez (b)  
SantaFe HealthCare, Inc. (b)  
S.F.I. (b)  
Graig D. & Kris Shaak (\*) (fs) (b)  
Sonny's BBQ (b)  
Mr. & Mrs. Michael Toomey (cs)  
AIG VALIC Financial Advisors (b)  
Catherine A. & Herbert G. Yardley (b)  
Patti & Ron Zollars (cs) (ms) (b)

## GIFTS OF \$1,000 OR MORE

Alfonso Architects, Inc. (b)  
AnswerThink, Inc. (b)  
Bruce Barber (b)  
Jo J. Bates (d) (fs)  
Paul G. Benedum, Jr.  
Jack & Tifi Bierley (b)  
Richard L. & Lynda M. Bucciarelli (b)  
Benjamin Castricone  
Wilbur E. & Cheryl K. Brewton (b)  
Joseph C. & Virginia J. Cauthen (fs) (ms)  
Jacklyn A. & David R. Challoner  
Coastal Construction Co. (b)  
David R. & Marion F. Colburn (cs)  
Community Foundation of New Jersey  
Compass Bank (b)

Carol A. Crevasse (fs) (ms)  
Courtney & Kitty Cunningham (b)  
Mr. & Mrs. Christopher V. Damian (b)  
David William Hotel (b)  
Sarah B. & Joshua C. Dickinson III (\*) (cs) (ms)  
Michael M. Dion  
Betty Dunckel (\*) (fs)  
James D. Eckert (b)  
Philip I. & Barbara L. Emmer (fs) (ms)  
Aurelio E. & Berta T. Fernandez (b)  
Fidelity Federal Bank & Trust (b)  
Florida Chemical Co., Inc.  
Follett Higher Education Group (b)  
Ford Motor Co. (cs)  
Mary Ellen & Paul E. Funderburk (fs)  
Gainesville Sun (b)  
Gardenia Garden Club  
Ira H. & Gerri E. Gessner (\*) (bo)  
Peggy W. & W. Marvin Gresham (ms)  
Daniel G. & Linda J. Grover-Maico (fs)  
Gulf Coast Community Fdn. of Venice  
Kathleen A. Deagan & Lawrence D. Harris (fs)  
Sandy Hayden (b)  
Hilton University of Florida (b)  
Kelly Foundation, Inc.  
Paul A. & Leslie R. Klein (\*) (ms)  
Koss-Olinger & Co. (fs)  
Lambert Foundation, Inc. (b)  
Beth & James E. McCague (b)  
W.A. & Elizabeth McGriff (b)  
Bob, Joelen & Ryan Merkel (ms)  
Mercantile Bank (b)  
Merrill Lynch (b)  
Paul F. & Ella Warren Miller  
Mr. & Mrs. Wade F. Milligan (b)  
Paula W. Moyer (fs)  
Joyce C. Mutz  
Reverend William D. & Anne V. Naulls, M.D. (fs)  
Lee Ann M. Newsom  
David A. Noble  
O.S. B-B-Q, Inc. (b)  
Alan & Barbara Pareira (b)  
Gene Prescott (b)  
Publix Super Markets Charities, Inc. (b)  
Anne D. & Charles L. Reynolds, Jr.  
Rinker Materials Corp (b)  
Arthur W. & Phyllis P. Saarinen (\*) (ms)  
Sanibel-Captiva Shell Club, Inc.  
Paul W. & Carole A. Schulz (b)  
Eric W. & Jennifer N. Scott (fs) (ms)  
Scruggs & Carmichael, P.A. (b)  
Ilene Silverman & Harvey M. Budd (\*) (ms)  
Richard T. & Jean W. Smith  
Smith, Thompson, Shaw & Manausa, P.A. (b)  
Andrea A. & William B. Spottswood (b)  
Mr. & Mrs. John A. Teegen (b)  
Turner Construction (b)  
Uniforce Sales & Engineering  
United Business Systems (fs)  
United Telephone Co. of Florida (b)  
Useppa Island Historical Society, Inc.  
John & Deborah Usher (ms)  
Mr. & Mrs. A. Ward Wagner  
Daniel B. Ward  
Bruce A. Weiss & Melinda M. Steffey (\*)  
Dr. & Mrs. Norris H. Williams (\*) (fs)  
Victor M. Yellen & Arlene C. Huszar (fs)

## GIFTS OF \$500 OR MORE

Alliant Partners LLC (b)  
Bruce C. & Karen Barber (b)  
BellSouth (b)  
Mr. & Mrs. Peter A. Bergsten  
Dr. & Mrs. Kenneth I. Berns (cs)

Black & Decker Corp. (b)  
Mr. & Mrs. Robert E. Boomer  
Mr. & Mrs. David T. Brown (cs)  
Robin C. & Mrs. Jan M. Brown  
Robert A. & Kathryn W. Bryan (\*) (b)  
Coca-Cola Co. (b)  
Sylvia A. Chappell  
Citrus Springs Elementary School  
Donald A. Cyzewski  
Charles H. & Wanda N. Denny (cs)  
David L. & Katherine S. Dilcher (fs)  
Lamot duPont  
Dr. & Mrs. Hansford W. Farris (cs)  
Charles T. Fisher, III  
Charles H. & Margaret Maples Gilliland (cs)  
Mark & Janice Gold (b)  
Elsbeth K. & Michael W. Gordon (\*) (b)  
Greater Pine Island Chamber of Commerce  
Mary Ann & Richard L. Green (cs)  
Robert D. & Lynne W. Holt (cs)  
Hone Marine Contracting, Inc.  
Harriett P. Hulbert  
Kelico, Inc. (b)  
Keith T. & Doreen G. Koenig (b)  
Koucky Studios & McGowan's Farm  
Roslyn F. & Norman S. Levy (\*) (b)  
Bruce J. & Jeannette D. MacFadden (fs) (b)  
Wayne & Lyla Masur (b)  
Mary S. May  
Donald E. & Mary Jane McClothlin (\*) (b)  
McLaughlin Tourism Management  
Joan M. McMahan  
Mark W. Meisel & Anna-Lisa Paul (cs)  
Merrill Lynch & Co. Foundation, Inc. (cs)  
Michael V. & Janis R. Martin (b)  
Ann E. & Geoffrey W. Moore (b)  
Mr. & Mrs. Craig D. Morin  
Dr. & Mrs. Michael P. Moulton  
Gregory A. Nelson (b)  
Marsh A. & Carolyn Nesmith (cs)  
Annette L. Perry (cs)  
Marilyn M. Roberts (\*)  
Edith K. & Arlan L. Rosenbloom (cs)  
Melvin & Lorna Rubin (b)  
School Board of Marion County  
Mr. & Mrs. James O. Shimeall (\*)  
Southwest Florida Council for Environment Education  
Warren D. Stortroen  
Robert & Carolyn S. Thoburn  
Time Warner, Inc.  
W. H. & Marie R. Tuck (\*)  
Mr. & Mrs. Stephen D. Tutko  
Volume & Velocity (cs)  
Lisa Wasshausen & Jamie M. Grooms (cs)

## GIFTS OF \$100 OR MORE

Anne M. Allan  
Douglas K. & Elizabeth S. Anderson (\*)  
Mr. & Mrs. Harold D. Andrews  
Janice D. Arinson (\*)  
Mr. & Mrs. Lawrence E. Aten  
Robert M. & Patricia C. Atkins (\*)  
Mr. & Mrs. William S. Badgley  
R. C. Balfour III (\*)  
Ed Barber (\*)  
Douglas J. & Mrs. Macqueline M. Barrett (b)  
Melda H. Bassett  
Richard M. Bastow (\*)  
Brian C. & Kimberly L. Beach (b)  
Bell Elementary School  
Mr. & Mrs. James J. Bell (\*)  
T. Peter & Gudrun S. Bennett (fs)  
Sandra A. & Jerry J. Berger (\*)  
Pamela J. & Geoffrey P. Bernard (b)  
Mr. & Mrs. Arnold Bertelsen

D. Michael & Judy E. Blachly (b)  
 Linda M. & Roger L. Blackburn (b)  
 Patricia M. Blackwell  
 W. Stan & Charity Blomeley (\*)  
 Linda B. & Stephen H. Bobroff (\*)  
 Mr. & Mrs. William Boden  
 Mr. & Mrs. William E. Brant (\*)  
 Joseph P. Brinton (3d)  
 H. Jane Brockmann & Thomas D. Rider (\*)  
 Bronson Elementary School  
 Brooker Elementary School  
 Myron A. & Louise W. Brown (\*)  
 Mr. & Mrs. Henry Browne  
 Mr. & Mrs. Harold D. Bruner  
 Brenda C. Burch  
 Linda S. & George H. Burgess, Jr. (\*)  
 Jacquelyn S. & William H. Cake (\*)  
 Charles V. & Marilyn W. Cangro (\*)  
 Canterbury School, Inc.  
 James C. & Rebecca M. Cato (b)  
 Captiva Cruises, Inc.  
 Caring & Sharing Learning Center  
 Cecilia A. & Donald Caton (\*)  
 John Cauthen  
 Cedar Key High School  
 Celebrations Cafe & Catering  
 Jefferson Chapman  
 J. Pope Cheney (d) (\*)  
 Citrus County School Board  
 Clay County School Board  
 Columbia City Elementary School  
 Columbia County School District  
 Columbia High School  
 Ann S. Cordell (\*)  
 Jose M. Cornide, Jr. (b)  
 Byron P. Croker (b)  
 Bruce & Virginia N. Culpepper (b)  
 Charles F. Dalton  
 Geraldine J. & James W. Daly (\*)  
 Donald W. & Elizabeth E. Denniston (\*)  
 Diamond Tours, Inc.  
 Eva A. Dimitrov & James C. Betz (\*)  
 Mr. & Mrs. Richard Dirk  
 Discovery Academy of Lake Alfred  
 J. Lee & Barbara K. Dockery (\*)  
 Audrey E. Clark & Richard Doenges (\*)  
 Mr. & Mrs. Charles W. Drake  
 Mr. & Mrs. Ernest M. Dumas (\*)  
 Edison Garden Club  
 G. H. Edwards & Associates, Inc.  
 Angela J. Enzweiler (\*)  
 Estero Historical Society  
 Expressions Learning Arts Academy  
 Mr. & Mrs. Stanley E. Farnham  
 T. Martin & Mary Ann Fiorentino (b)  
 Florida 4-H Club Foundation, Inc.  
 Florida Fossil Hunters  
 Ford, Miller & Wainer, P.A. (b)  
 Four Points Editing, LLP  
 David W. & Carolyn B. Fouts  
 Dr. & Mrs. John R. Fox  
 Chuck & Lynn Frazier (b)  
 Laurel J. & Howard G. Freeman (\*)  
 Friends of the Englewood Charlotte Lib.  
 Gaea Guides  
 Mr. & Mrs. Johnny W. Gay (\*)  
 Ellen R. & James A. Gershow (b)  
 Nancy H. & Carter R. Gilbert (\*)  
 Miles E. Gilman (b)  
 Glen Springs Elementary School  
 Prof. Mandell & Joyce K. Glicksberg (\*)  
 B.E. & Harriot H. Greene (b)  
 Margaret L. Griffin  
 Barbara L. Hackett (\*)  
 Abraham G. Hartzema (b)  
 C. Hager & Sons Hinge Mfg. Co.  
 Harcourt, Inc.  
 Jo Ella L. & J. Ocie Harris (\*)

Gene W. & Evelyn H. P. Hemp (\*)  
 Laurel C. & Harry O. Hendry  
 Billie B. & James D. Henry (\*)  
 Brenda Hill  
 Mr. & Mrs. William C. Hillegass (\*)  
 J. Bruce & Marion Hoffmann (b)  
 Charles I. & Bobbie Lee Holden (b)  
 Meryl K. & Mark E. Hostetler (\*)  
 Catherine A. House  
 Howard Bishop Middle School  
 Mr. & Mrs. R. H. Hudgins (b)  
 Prof. E. L. Roy Hunt (\*) (b)  
 David P. Hurst  
 Robert K. Hutchinson & Meg A. Niederhofer (\*)  
 Eleanor M. Hynes  
 IBM Corp.  
 Idylwild Elementary School  
 Robert T. & Donna M. Ing (\*)  
 Intl. Archaeological Research Institute  
 Lois C. Irvine  
 Lila L. & Stanley Z. Jacobson (\*)  
 Mr. & Mrs. Ben Johnson  
 Mr. & Mrs. Carl E. Johnson  
 Terry Johnson  
 Dr. & Mrs. Richard L. Jones (b)  
 Mr. & Mrs. Thomas A. Joseph  
 Mrs. Jean W. Kaufman (\*)  
 Kelley Smith Elementary School  
 Keystone Heights Elementary School  
 Gerald & Kathryn L. Kidder (\*)  
 Thomas S. Kilduff  
 King Insurance Agency (\*)  
 Carole A. & Dudley P. Kircher  
 Kenneth B. & Suzanne Kirkpatrick (\*)  
 Mr. & Mrs. Robert N. Kish  
 Mr. & Mrs. Robert A. Klepper  
 Ronald M. & Mary M. Koontz  
 Lafayette Elementary School  
 Joanna W. & Chester W. Leathers (\*)  
 Mr. & Mrs. Dennis G. Lee (\*)  
 Douglas J. Levey & Lisa Wysocki (\*)  
 Janet E. Levy  
 Littlewood Elementary School  
 LKC Foundation  
 Judy L. Locascio (\*) (ms) (b)  
 Madelyn M. Lockhart (b)  
 Paul C. & Dawn B. Logas (\*)  
 Ralph L. & Bronia L. Lowenstein (\*)  
 Nancy C. & Neill W. Macaulay, Jr. (\*)  
 Mr. & Mrs. Donald A. MacInnes (b)  
 Darcie A. MacMahon & David P. Harlos (\*)  
 Karen J. Malesky (\*)  
 Tony Malone & Margaret E. Hanrahan  
 Mr. & Mrs. Robert D. Manley (\*)  
 Martha Manson Academy, Inc.  
 Ellen & Jonathan B. Martin (\*)  
 Oliverne M. Mattson (\*)  
 John E. McAllister & Robin C. Krivanek  
 Jennie McBean  
 J. David & Liz M. McGonagle (\*)  
 McGraw-Hill Companies  
 Michael J. McNerney (b)  
 McRae Elementary School  
 Rick Medina & Teina M. Phillips (\*)  
 Melrose Park Elementary School  
 Mr. & Mrs. Richard Merritt  
 Jerald T. Milanich & Maxine L. Margolis (\*)  
 Susan Milbrath & Mark Brenner (\*)  
 Ellen L. & Gary J. Miller, Ph.D. (\*)  
 Cynthia E. & Gwenuel W. Mingo (\*)  
 Mr. & Mrs. Scott E. Mitchell (\*)  
 Barbara A. Mulle  
 Myra Terwilliger School  
 New Beginnings  
 Jay Niles & Suzie Svacina (\*)  
 Howard L. & Karen K. Noonan  
 A. Darlene & Jeffrey L. Novak (\*)

Mr. & Mrs. Edward R. Oelschlaeger  
 David H. & Faith M. Oi (\*)  
 Eugene K. & Sheila L. Pettis (b)  
 One Room School House Project, Inc.  
 Mr. & Mrs. John A. Paeno  
 Francis U. Paige  
 Claudine Payne  
 Pearson Education  
 Mr. & Mrs. Vernon E. Peeples  
 Mr. & Mrs. Nicholas G. Penniman IV (\*)  
 David A. & Mrs. Darbee S. Percival  
 Edward Petkus (\*)  
 Susan B. Pharr & Ian Duvenhage (\*)  
 Philips Electronics North America Corp.  
 A.P. Phillips Foundation, Inc. (b)  
 Photosearch, Inc.  
 Mr. & Mrs. Thomas M. Pinckard (\*)  
 Pinedale Elementary School No. 93  
 James M. & Jennifer E. Pochurek (\*)  
 Jim & Patricia Pochurek (\*)  
 Pronk & Associates  
 Eduardo & Ximena M. Puente (b)  
 Queen of Peace Academy  
 Paul E. & Karen B. Ramey (\*)  
 Frances A. Ramos-Rosa  
 Kenneth H. & Colleen S. W. Rand (\*)  
 Alan I. & Amy C. Reed  
 Riverside Presbyterian Day School  
 Audrey E. & James R. Rooney (\*)  
 Caroline H. Ross (b)  
 Mr. & Mrs. Carl D. Roston (b)  
 Round Lake Elementary School  
 Richard E. & Ellen W. Roundtree (\*)  
 Donna L. Ruhl (\*)  
 Paul F. & Kathleen Carlton Ruppert (\*)  
 Deborah L. Russell  
 Saint Johns County Council on Aging  
 M.G. Sanchez & Bonnie Davis (b)  
 Eleanor R. & Richard P. Schmidt (\*)  
 Katherine J. Schreck  
 Mr. & Mrs. Karl F. Schroeder  
 Helene P. & Henry E. Schulz  
 Herbert & Betty Seidel  
 Beverly S. & Jon F. Sensbach (\*)  
 Gilbert R. & Mary F. Sessi  
 Seven Springs Travel Center, Inc.  
 Shady Hill Elementary School  
 Lt. Col. & Mrs. John C. Sirmans  
 Skylar-Robin & John C. Lane  
 Geoff Spiegel (b)  
 Michael S. Spranger & Karen M. Blyler (\*)  
 St. Johns Country Day School  
 Mr. & Mrs. Stuart L. Stauss (\*)  
 Anne V. Stokes, Ph.D. & David W. Steadman (\*)  
 Barbara L. & G. Robert Sumwalt  
 Mr. & Mrs. Joseph Thomas (\*)  
 Tropic Star of Pine Island, Inc.  
 Lyle M. Ulinski  
 United Space Alliance Trust (\*)  
 University Press of Florida  
 Karen Jo Walker (\*)  
 Walt Disney World Co.  
 Richard A. & Patty J. Watson  
 Wilse B. & Mary H. Webb (\*)  
 Molly E. Webb-Beatty & David E. Beatty (\*)  
 Howard V. & Camilla B. Weems (\*)  
 Mr. & Mrs. Ernest C. Whitbeck III  
 Wayne T. & Maria Wiles (b)  
 Laurie Wilkins  
 Dr. & Mrs. Charles S. Williams (b)  
 Mr. & Mrs. Edward T. Winn (\*)  
 Ann L. Winterbotham  
 Diane E. Woelfel  
 Christopher R. & Carol A. Woodyard (\*)  
 William P. & Ann S. Wollschlager (\*)



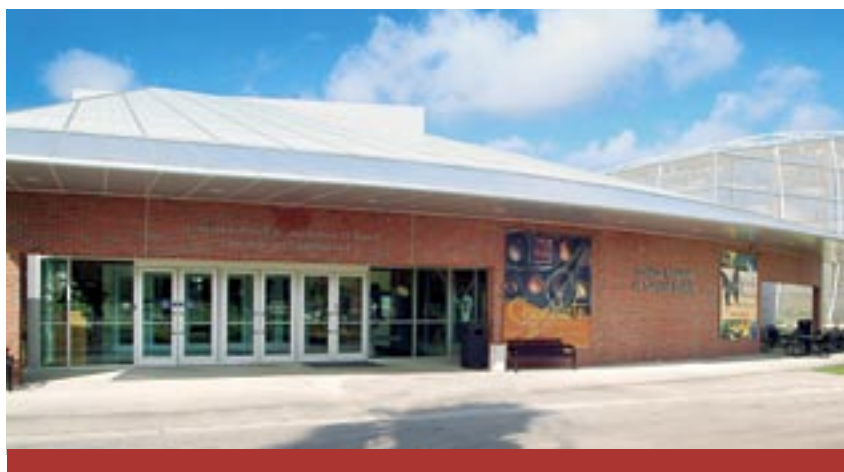
#### GIFTS TO PERMANENT COLLECTIONS

Lois W. Dunnam  
 Thomas C. Emmel  
 Floyd W. Preston  
 Mark J. Simon  
 Leonard O. Walker  
 April K. Walsh  
 Valerie Warren

#### LEGEND

(d) = deceased  
 b = 150th UF Birthday Celebration  
 cs = Curators Society  
 ms = Monarch Society  
 \* = Associate Member  
 fs = Founders Society [gift this FY]





The fiscal year began with a very successful sesquicentennial celebration for the University of Florida, which raised more than \$1 million to be shared equally by the three institutions of UF's Cultural Plaza. When these funds are matched by the state in an endowment fund, the Florida Museum will use the proceeds to enhance public programs and exhibitions. The Florida Museum will continue to partner in joint fundraising and programs with our UF Cultural Plaza neighbors, the Harn Museum of Art and the Phillips Center for the Performing Arts.

Major gifts from Reed and Barbara Toomey, Jon and Beverly Thompson and AEC Trust were key in our completion of the Hall of Florida Fossils. This technically complex exhibit, epochs in the making, completed the permanent exhibition planned for Powell Hall only seven years from its opening.

As the fiscal year ended, the McGuire Center for Lepidoptera and Biodiversity neared completion as a result of several very generous gifts from the McGuire Family Foundation totaling \$1,214,200. The McGuire Center is already recognized as the premiere address for Lepidopterists, and the Museum is hiring world-class research, curatorial and educational staff. To support McGuire Center public exhibitions and programs, the Museum created the Monarch Society to recognize donors who commit at least \$10,000 for this new center. Nearly 20 donors pledged their support within the first few months after the fund's creation.

The Museum Associates Board strengthened its fundraising with strong participation in all events and generous contributions lead by President Peggy Kirkpatrick. The Museum increased its new and renewing memberships to 788.

## THANK YOU!

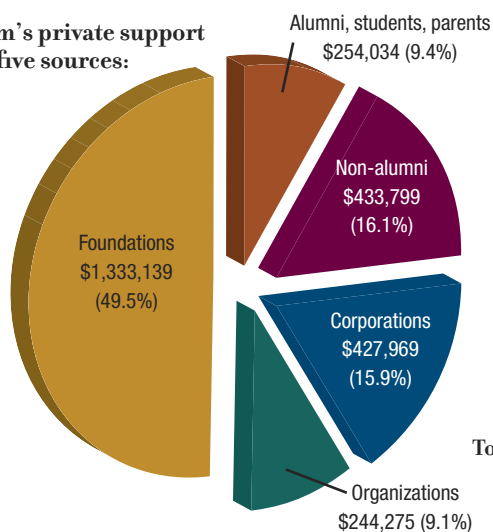
The Florida Museum of Natural History has continued to grow in excellence as a result of public and private donors. Thank you for your generous support!

*The Florida Museum is associated with the University of Florida Foundation, which receives, invests and accounts for all charitable contributions. The UF Foundation is a direct support organization and charitable contributions are regulated by section 501(c)(3) of the Internal Revenue Code.*

## PRIVATE SUPPORT

FY 2003-2004

The Museum's private support came from five sources:





Albert, J.S. and W.G.R. Crampton. 2003. Family Hypopomidae: Bluntnose knife-fishes. pp. 494-496 in R. Reis, S.O. Kullander and C.J. Ferraris, eds. *Checklist of Freshwater Fishes of South and Central America*. Edipucrs, Porto Alegre.

Albert, J.S. and W.G.R. Crampton. 2003. Seven new species of the Neotropical electric fish *Gymnotus* (Teleostei: Gymnotiformes) with a redescription of *G. carapo* (Linnaeus). *Zootaxa* 28:1-54.

Allen, G.A., D.E. Soltis and P.S. Soltis. 2003. Phylogeny and biogeography of Erythronium (Liliaceae) inferred from chloroplast matK and nuclear rDNA ITS sequences. *Systematic Botany* 28:512-523.

Angiosperm Phylogeny Group II (includes P.S. Soltis). 2003. An update of the Angiosperm Phylogeny Group classification for the orders and families of flowering plants: APG II. *Botanical Journal of the Linnean Society* 141:399-436.

Antón, S.C. and D.W. Steadman. 2003. Mortuary patterns in caves on Mangaia, Cook Islands. *International Journal of Osteoarchaeology* 13:132-146.

Asakura, A. and G. Paulay. 2003. Pylopaguropsis lemairei, a new species of hermit crab (Decapoda: Anomura: Paguridae) from French Polynesia. *Crustacean Research* 32:13-25.

Aten, L. and J.T. Milanich. 2003. Clarence Bloomfield Moore: a Philadelphia archaeologist in the southeastern United States. pp. 113-133 in D.D. Fowler and D.R. Wilcox, eds. *Philadelphia and the Development of Americanist Archaeology*. University of Alabama Press, Tuscaloosa.

Attum, O., C.V. Covell, Jr. and P. Eason. 2004. The comparative diet of three Saharan sand dune skinks. *African J. Herp.* 53(1):91-94.

Auffenberg, K., K.L. Krysko and W. Auffenberg. 2004. Studies on Pakistan lizards: *Cyrtopodion stoliczkaei* (Steindachner, 1867) (Gekkonidae: Gekkoninae). *Asiatic Herpetological Research* 10:151-160.



Austin, G.T. 2004. Review of *Field guide to butterflies of South Dakota* by G.M. Marrone. *Journal of the Lepidopterists' Society* 58:59-60.

Austin, G.T., D.D. Murphy, J.F. Baughman, A.E. Launer and E. Fleishman. 2003. Hybridization of checkerspot butterflies in the Great Basin. *Journal of the Lepidopterists' Society* 57:176-192.

Aveni, A.F., S. Milbrath and C. Peraza. 2004. Chichen Itza's legacy in the astronomically oriented architecture of Mayapan. *RES* 45:123-143.

Banks, R.C., C. Cicero, J.L. Dunn, A.W. Kratter, P.C. Rasmussen, J.V. Remsen, Jr., J.A. Rising and D.F. Stotz. 2003. Forty-fourth supplement to the American Ornithologists' Union check-list of North American birds. *Auk* 120:923-931.

Barclay, R.S., K.R. Johnson, W.J. Betterton and D.L. Dilcher. 2003. Stratigraphy and megafloora of a K-T boundary section in the eastern Denver Basin, Colorado. *Rocky Mountain Geology* 38:45-71.



Boucher, L.D., S.R. Manchester and W.S. Judd. 2003. An extinct genus of Salicaceae based on twigs with attached flowers, fruits, and foliage from the Eocene Green River Formation of Utah and Colorado, USA. *American Journal of Botany* 90:1389-1399.

Burgess, G.H. 2004. [Review of] *Sharks, rays, and Chimaeras of California and Sharks, skates, and rays of the Carolinas*. *The Quarterly Review of Biology* 79(2):210-211.



Buzgo, M., D.E. Soltis and P.S. Soltis. 2004. Integrating morphological and genetic studies of floral development. *Trends in Plant Science* 9:164-173.

Carlson, L.A. and W.F. Keegan. 2004. Prehistoric resource depletion in the northern West Indies. pp. 85-107 in S. Fitzpatrick, ed. *Voyages of Discovery*. Westwood Press, Connecticut.

Carnevali, G., J.L. Tapia, N.H. Williams and W.M. Whitten. 2003. Sistemática, filogenia y biogeografía de Myrmecophila (Orchidaceae). *Lankesteriana* 7:29-32.

Clements, C.O. and W.F. Keegan, eds. 2003, 2004. *Journal of Caribbean Archaeology*, 4&5, Special Publication 1.

Crampton, W.G.R. and J.S. Albert. 2003. Redescription of *Gymnotus coropinae* (Gymnotiformes, Gymnotidae), an often misidentified species of Neotropical electric fish, with notes on natural history and electric signals. *Zootaxa* 348:1-20.

Crampton, W.G.R. and J.S. Albert. 2004. Redescription of *Gymnotus coatesi* (Gymnotiformes, Gymnotidae), a Rare Species of Electric Fish from the Lowland Amazon Basin, with Descriptions of Osteology, Electric Signals and Ecology. *Copeia* 2004(3):525-533.

Crampton, W.G.R., D.H. Thorsen and J.S. Albert. 2003. *Steatogenys ocellatus*, a new species of Neotropical electric fish (Gymnotiformes: Hypopomidae) from the lowland Amazon Basin. *Copeia* 2004 (1):78-91.

Crampton W.G.R., L. Castello and J.P. Viana. 2004. Fisheries in the Amazon várzea: historical trends, current status, and factors affecting sustainability. pp. 76-98 in K. Silvius, R. Bodmer and J. Frago, eds. *People and nature: wildlife conservation in South and Central America*. Columbia University Press, New York.

Crampton, W.G.R., K.G. Hulen and J.S. Albert. 2004. Redescription of *Sternopygus obtusirostris* Steindachner (Gymnotiformes, Sternopygidae) from the Amazon Basin, with descriptions of ecology and electric organ discharges. *Ichthyological Exploration in Freshwaters* 15(1):121-134.



Crampton, W.G.R., K.G. Hulen and J.S. Albert. 2004. *Sternopygus branco*, a new species of Neotropical electric fish (Gymnotiformes: Sternopygidae) from the lowland Amazon Basin, with descriptions of osteology, ecology and electric organ discharges. *Copeia* 2004(2):244-258.

Crampton, W.G.R., N.R. Lovejoy and J.S. Albert. 2003. *Gymnotus ucumari*: a new species of Neotropical electric fish from the Peruvian Amazon (Ostariophysi: Gymnotidae), with notes on ecology and electric organ discharges. *Zootaxa* 277:1-18.

Crampton W.G.R., J.P. Viana, L. Castello and J.M.B. Damasceno. 2004. Fisheries management in the Mamirauá Sustainable Development Reserve. pp. 99-122 in K. Silvius, R. Bodmer and J. Frago, eds. *People and nature: wildlife conservation in South and Central America*. Columbia University Press, New York.

Davies, T.J., T.G. Barraclough, M.W. Chase, P.S. Soltis, D.E. Soltis and V. Savolainen. 2004. Darwin's abominable mystery: insights from a supertree of the angiosperms. *Proceedings of the National Academy of Sciences* 101:1904-1909.

Deagan, K. 2003. Transformation of empire: The Spanish colonial project in America. *Historical Archaeology* 37(4):3-13.

Deagan, K. 2004. Reconsidering Taino social dynamics after Spanish conquest: Gender and class in culture contact studies. *American Antiquity* 69(4):597-626.

Deagan, K. 2004. La Isabela en el paradigma inter-atlántico: La colonia Española de la isla Española (1493-1550) desde la perspectiva arqueológica. pp. 1987-1999 in F.M. Padrón, ed. *Actas del XV Coloquio de Historia Canario-Americana*. Casa de Colon: Las Palmas de Gran Canaria (España).

Deagan, K. 2004. [Review of] *Cerámica y Cultura: The Story of Spanish and Mexican Majolica* by R.F. Gavin, D. Pierce and A. Pleguezuelo, eds. Albuquerque: University of New Mexico Press. *Journal of Anthropological Research*. 60(4).

Dilcher, D.L. and C.R. Hill. 2003. A heterophyllous fern from the Lower Cretaceous of northern Spain. *Courier Forschungsinstitut Senckenberg* 242:111-117.

Donovan, S.K., R.K. Pickerill, R.W. Portell, T.A. Jackson and D.A.T. Harper. 2003. The Miocene palaeobathymetry and palaeoenvironment of Carriacou, the Grenadines, Lesser Antilles. *Lethaia* 36(3):255-272.

Donovan, S.K., R.W. Portell and J.S.H. Collins. 2003. Cretaceous and Cainozoic decapod crustaceans of Jamaica. Second Symposium on Mesozoic and Cainozoic Decapod Crustaceans. *Contributions to Zoology* 72(2-3):105-109. Boxtel, The Netherlands.

Douglas, J.F. and L.D. Miller. 2004. Afrotropical skippers (Lepidoptera: Hesperioidea) and the emergence of the combined refugium theory. *Bulletin of the Allyn Museum* 143:1-18.



Dressler, R.L. and N.H. Williams. 2003. New combinations in Mesoamerican Oncidiinae (Orchidaceae). *Selbyana* 24(1):44-45.

Dressler, R.L., W.M. Whitten and N.H. Williams. 2004.

Molecular systematics of Scaphyglottis and related genera (Orchidaceae). *Brittonia* 56:58-66.



Emberton, K.C. 2003. *Fischerpetteus*, a new genus of streptaxid land snails from northern Madagascar. *Veliger* 46:225-238.

Emberton, K.C. 2003. Two aberrant new helicarioid land snail species from northern Madagascar. *Veliger* 46:329-331.

Emberton, K.C. 2003. Madagascan *Cyathopoma* sensu lato (Gastropoda: Cyclophoridae). *Archiv für Molluskenkunde* 132:9-91.

Emberton, K.C. 2004. Madagascan *Georissa*, *Omphalotropis*, *Cyclotus*, and so-called *Chondrocyclus* (Caenogastropoda). *Archiv für Molluskenkunde* 133:69-107.

Emery, K.F. 2003. A bibliography of literature by Elizabeth S. Wing. pp. 205-208 in F.W. King and C.M. Porter, eds. *Zoarchaeology: papers to honor Elizabeth S. Wing*. Bulletin of the Florida Museum of Natural History 44(1).

Emery, K.F. 2003. The economics of natural resource use at ancient Motul de San Jose, Guatemala. *Mayab* 16:33-48.

Emery, K.F. 2003. Enduring foundations to a holistic science: lessons in environmental archaeology from Elizabeth S. Wing. pp. 3-10 in F.W. King and C.M. Porter, eds. *Zoarchaeology: papers to honor Elizabeth S. Wing*. Bulletin of the Florida Museum of Natural History 44(1).

Emery, K.F. 2003. [Review of] *Animals and plants of the ancient Maya* by V. Schlesinger. *Latin American Antiquity* 14(1):103-104.

Emery, K.F. 2003. [Review of] *Salt: white gold of the Maya* by H. McKillop. *Mesoamérica* 24(45):231-234.

**Emery, K.F.** 2004. Animales del inframundo Maya: reconstruyendo los rituales de las elites a través de los restos animales de la Cueva de los Quetzales, Guatemala. pp. 219-238 in J.P. Laporte, H.L. Escobedo, A.C. Munzón de Suasnavar and B. Arroyo, eds. *XVII Simposio de Investigaciones Arqueológicas en Guatemala*. Guatemala: Instituto de Antropología e Historia.

**Emery, K.F.** 2004. Environments of the Maya collapse: a zooarchaeological perspective from the Petexbatún, Guatemala. pp. 81-96 in K.F. Emery, ed. *Maya zooarchaeology: new directions in method and theory*. Institute of Archaeology, UCLA Press, Los Angeles, California.

**Emery, K.F.** 2004. Historical perspectives on research directions in Maya zooarchaeology. pp. 1-12 in K.F. Emery, ed. *Maya zooarchaeology: new directions in method and theory*. Institute of Archaeology, UCLA Press, Los Angeles, California.

**Emery, K.F.** 2004. In search of assemblage comparability: methods in Maya zooarchaeology. pp. 15-34 in K.F. Emery, ed. *Maya zooarchaeology: new directions in method and theory*. Institute of Archaeology, UCLA Press, Los Angeles, California.

**Emery, K.F.** 2004. Introduction to Maya zooarchaeology. pp. xi-xiii in K.F. Emery, ed. *Maya zooarchaeology: new directions in method and theory*. Institute of Archaeology, UCLA Press, Los Angeles, California.

**Emery, K.F.** 2004. Maya zooarchaeology: in pursuit of cultural variability and environmental heterogeneity. pp. 217-241 in C. Golden and G. Borgstede, eds. *Continuities and changes in Maya archaeology: perspectives at the Millennium*. Routledge Press, New Jersey.

**Emery, K.F.**, ed. 2004. *Maya Zooarchaeology: new directions in method and theory*. Institute of Archaeology, UCLA Press, Los Angeles, California.

**Emery, K.F.** and E. Graham. 2003. A marine resource survey at Marco Gonzalez, Belize. pp. 68-102 in K.M. Stewart and F.L. Stewart, eds. *Transitions in zooarchaeology*. *Journal of Canadian Zooarchaeology Supplement 1*. Canadian Museum of Nature, Ottawa, Ontario.

Evans, J. and L.M. Page. 2003. Distribution and relative size of the swim bladder in *Percina*, with comparisons to *Etheostoma*, *Crystallaria*, and *Ammocrypta* (Teleostei: Percidae). *Environmental Biology of Fishes* 66:61-65.

**Franz, R.** 2004. Obituary: Walter Auffenberg. *Gopher Tortoise Newsletter* and *Fossil Tortoise Newsletter* Spring Issue. 24(1):1.

**Franz, R.** 2004. Obituary: Walter Auffenberg. *Herpetological Review* 35(3):215-216.

Fukami, H., A.F. Budd, G. Paulay, A. Solé-Cava, K. Iwao and N. Knowlton. 2004. Conventional taxonomy obscures deep evolutionary divergence between Pacific and Atlantic corals. *Nature* 427:832-835.

Greer, A.E., K. Auffenberg and W. Auffenberg. 2004. Studies on Pakistan lizards: Observations on the scincid lizard *Mabuya dissimilis* (Hallowell, 1860) with comments on two other species in the genus. *Hamadryad* 28(1-2):66-72.

Hardman, M. and L.M. Page. 2003. Phylogenetic relationships among bullhead catfishes, genus *Ameiurus* (Siluriformes: Ictaluridae). *Copeia* 2003:20-33.

Harper, D.A.T. and R.W. Portell. 2003. *Argyrotheca* (Brachiopoda) from the Pliocene Bowden Shell Bed, St. Thomas Parish, Jamaica. *Cainozoic Research* 2(1-2):9-11.

**Hay-Roe, M.M.** and R.W. Mankin. 2004. Wing-click sounds of *Heliconius cydno alithea* (Nymphalidae: Heliconiinae) butterflies. *Journal of Insect Behavior* 17(3):329-335.

**Hay-Roe, M.M.**, D.G. Boucias, A.M. Shapiro and J.J. Becnel. 2003. A newly discovered baculovirus induces reflex bleeding in the butterfly *Heliconius himera* (Nymphalidae: Heliconiinae). *Journal of Invertebrate Pathology* 84(1):59-62.

Henning, M.H., S.K. Robinson, K.J. McKay, J.P. Sullivan and H. Brucker. 2003. Productivity of American robins exposed to polychlorinated biphenyls, Housatonic River, Massachusetts, USA. *Environmental Toxicology and Chemistry* 22:2783-2788.



Herbert, G.S. and R.W. Portell. 2004. First Paleontological record of larval brooding in the calyptraeid gastropod genus *Crepidula* Lamarck, 1799. *Journal of Paleontology* 78(2):424-429.

Hershler, R., H.-P. Liu and F.G. Thompson.

2003. Phylogenetic relationships of North American nymphiophiline gastropods based on mitochondrial DNA sequences. *Zoologica Scripta* 32:357-366.

**Higgins, P.** and B.J. MacFadden. 2004. "Amount Effect" recorded in oxygen isotopes of Late Glacial horse (*Equus*) and bison (*Bison*) teeth from the Sonoran and Chihuahuan deserts, southwestern United States. *Palaeogeography, Palaeoclimatology, Palaeoecology* 206:337-353.

Hilu, K.W., T. Borsch, K. Müller, D.E. Soltis, P.S. Soltis, V. Savolainen, M.W. Chase, M.P. Powell, L.A. Alice, R. Evans, H. Sauquet, C. Neinhuis, T.A.B. Slotta, J.G. Rohwer, C.S. Campbell and L.W. Chatrou. 2003. Angiosperm phylogeny based on matK sequence information. *American Journal of Botany* 90:1758-1776.



Horn, S.P., R.L. Sanford Jr., D.L. Dilcher, T.A. Lott, P.R. Renne, M.C. Wiemann, D. Cozadd and O. Vargas. 2003. Pleistocene plant fossils in and near La Selva Biological Station, Costa Rica. *Biotropica* 35(3):434-441.

Julian, D., W.G.R. Crampton, S.E. Wolgemuth and J.S. Albert. 2003. Oxygen consumption in weakly electric Neotropical Fishes. *Oecologia* 137(4):502-511.

**Keegan, W.F.** 2004. Caribbean area. pp. 40-48 in L. Boudon, ed. *Handbook of Latin American Studies* 59. U.S. Library of Congress, Hispanic Division. University of Texas Press, Austin.

**Keegan, W.F.** 2004. Islands of chaos. pp. 33-44 in A. Delpeuch and C.L. Hofman, eds. *Late Ceramic Age Societies in the Eastern Caribbean*. BAR International Series; Paris Monographs in American Archaeology 14. Archaeopress, Oxford.

**Keegan W.F., R.W. Portell and J. Slapcinsky.** 2003. Changes in invertebrate taxa at two pre-Columbian sites in southwestern Jamaica, AD 800-1500. *Journal of Archaeological Science*, 30(12):1607-1617.

Kim, S., D.E. Soltis, P.S. Soltis and Y. Suh. 2004. DNA sequences from Miocene fossils: an ndhF sequence of *Magnolia latahensis* (Magnoliaceae) and an rbcL sequence of *Persea pseudocarolinensis* (Lauraceae). *American Journal of Botany* 92:615-620.



Kim, S., D.E. Soltis, P.S. Soltis, M.J. Zanis and Y. Suh. 2004. Phylogenetic relationships among early-diverging eudicots based on four genes: were the eudicots ancestrally woody? *Molecular Phylogenetics and Evolution* 31:16-30.

**King, F.W.** and C.M. Porter, eds. 2003. *Zooarchaeology: papers to honor Elizabeth S. Wing*. *Bulletin of the Florida Museum of Natural History* 44(1).

Knouft, J.H. and L.M. Page. 2003. The evolution of body size in extant groups of North American freshwater fishes: speciation, size distributions, and Cope's Rule. *American Naturalist* 161:413-421.

Knouft, J. H., L.M. Page and M.J. Plewa. 2003. Antimicrobial egg cleaning: a novel form of parental care in fishes. *Proceedings of the Royal Society London B* 1531:2405-2412.

**Kratter, A.W.** and D.W. Steadman. 2003. First Atlantic Ocean and Gulf of Mexico record of Short-tailed Shearwater (*Puffinus tenuirostris*). *North American Birds* 57:277-279.

**Krisko, K.L.**, C.M. Sheehy III and A.N. Hooper. 2003. Interspecific communal oviposition and reproduction of four species of lizards (Sauria: Gekkonidae) in the lower Florida Keys. *Amphibia-Reptilia* 24(3):390-396.

**Krisko, K.L.**, A.N. Hooper and C.M. Sheehy III. 2003. The Madagascar giant day gecko, *Phelsuma madagascariensis grandis* Gray 1870 (Sauria: Gekkonidae): A new established species in Florida. *Florida Scientist* 66(3):222-225.

Kvacek, Z. and S.R. Manchester. 2004. Vegetative and reproductive structure of the extinct *Platanus neptuni* from the Tertiary of Europe and relationships within the Platanaceae. *Plant Systematics and Evolution* 244: 1-29.



Lydeard, C., R.H. Cowie, A.E. Bogan, P. Bouchet, K.S. Cummings, T.J. Frest, D.G. Herbert, R. Hershler, O. Gargominy, K. Perez, W. F. Ponder, B. Roth, M. Seddon, E.E. Strong and F.G. Thompson. 2004. The global decline of nonmarine mollusks. *BioScience* 54(4):321-331.

**MacFadden, B.J.** and P. Higgins. 2004. Ancient ecology of 15 million-year-old browsing mammals within C3 plant communities from Panama. *Oecologia* 140:169-182.

**MacFadden, B.J.** and G.S. Morgan. 2004. New oreodont (Mammalia, Artiodactyla) from the Late Oligocene (early Arikarean) of Florida. *Bulletin of the American Museum of Natural History* 279:368-396.

**MacFadden, B.J.**, P. Higgins, M. Clementz and D.S. Jones. 2004. Diets, habitat preferences, and niche differentiation of Cenozoic sirenians from Florida: Evidence from stable isotopes. *Paleobiology* 30:297-324.

**MacFadden, B.J., J. Labs, I. Quitmyer and D.S. Jones.** 2004. Incremental growth and diagenesis of skeletal parts of the lamnoid shark *Otodus obliquus* from the early Eocene (Ypresian) of Morocco. *Palaeogeography, Palaeoclimatology, Palaeoecology* 206:179-192.



**Marquardt, W.H.** 2004. Obituary: Charles Joslyn Wilson. *The Florida Anthropologist* 56:301-302.

**Marquardt, W.H.** 2004. A personal retrospective on archaeological curation in the USA. pp. 169-174 in S.T. Childs, ed. *Our Collective Responsibility: The Ethics and Practice of Archaeological Collections Stewardship*. Society for American Archaeology, Washington, D.C.

**Marquardt, W.H.**, V.P. Stepanaitis, K. Sassaman, R.P.S. Davis, G. Waselkov, R. Mainfort and V.J. Knight. 2003. The editors speak: reminiscences of the editors of the journal *Southeastern Archaeology* on the occasion of its twentieth anniversary. *Southeastern Archaeology* 22:1-8.

Matsukuma, A., G. Paulay and N. Hamada. 2003. *Chamaerion* n. sp. a new chamid bivalve (Mollusca) from Polynesia and Melanesia. *Venus* 62:19-27.

**Milanich, J.T.** 2003. Series editor's preface. pp. x-xx in J.H. Hann, ed. *Indians of Central and South Florida, 1513-1763*. University Press of Florida, Gainesville.

**Milanich, J.T.** 2004. Foreword. pp. xiii in J.A. Bense, ed. *Presidio Santa Maria de Galve: A Struggle for Survival in Early 18<sup>th</sup>-Colonial Pensacola*. University Press of Florida, Gainesville.

**Milanich, J.T.** 2004. Osceola's Head. *Archaeology* 57(1):48-53.

**Milbrath, S.** and C. Peraza. 2003. Mayapan's scribe: a link with Classic Maya artists. *Mexicon* XXV:120-123.

**Miller, J.Y., A.O. DeBrot and L.D. Miller.** 2004. Butterflies of Aruba and Bonaire with new species records for Curacao. *Caribbean Journal of Science* 39:170-175.

**Morgan, A.** and G.H. Burgess. 2004. Fishery-independent sampling: total catch, effort and catch composition. pp. 241-263 in J.A. Musick and R. Bonfil, eds. *Elasmobranch fisheries management techniques*. APEC Fisheries Working Group, Singapore.



Morgan, G.S. and L. Wilkins. 2003. The extinct rodent *Clidomys* (Heptaxodontidae) from a Late Quaternary cave deposit in Jamaica. *Caribbean Journal of Science* 29(1):34-41.

**Nickerson, M.A.** 2003. Asiatic giant salamanders and hellbenders. pp. 343-347 in M.H. Hutchins and W.E. Duellman, eds. *Czirmek's Animal Life Encyclopedia*, 2nd Edition, *Amphibia* 6. Gale Group, Detroit.

**Nickerson, M.A.** 2004. Foreword in Trauth, S.E., H.W. Robison and M.V. Plummer, eds. *The Amphibians and Reptiles of Arkansas*. University of Arkansas Press, Fayetteville.

**Nickerson, M.A., K.L. Krysko** and R.D. Owen. 2003. Habitat differences affecting age class distributions of the hellbender salamander *Cryptobranchus alleganiensis alleganiensis*. *Southeastern Naturalist* 2(4):619-629.

Ojeda, I., G. Carnevali, N.H. Williams and W.M. Whitten. 2003. Phylogeny of the Heterotaxis complex (Maxillariinae): evolution of the vegetative architecture and pollination syndromes. *Lankesteriana* 7:45-47.

Olendorf, R., T. Getty, K. Scribner and S.K. Robinson. 2004. Males distrust sexually attractive neighbors. *Proceedings of the Royal Society, London (B)* 271:1033-1038.

**Page, L.M.** 2003. [Review of] *Candiru: life and legend of the bloodsucking catfishes* by S. Spotte. *Quarterly Review of Biology* 78:365-366.

**Page, L.M., M. Hardman** and T.J. Near. 2003. Phylogenetic relationships of barcheek darters (Percidae: *Etheostoma*, Subgenus *Catonotus*) with descriptions of two new species. *Copeia* 2003:512-530.

**Piercy, A.N., J.J. Gelsleichter** and F.F. Snelson, Jr. 2003. Morphological and histological changes in the genital ducts of the male Atlantic stingray, *Dasyatis sabina*, associated with the seasonal reproductive cycle. *Fish Physiology and Biochemistry* 29(1):23-35.



Pigg, K.B., S.R. Manchester and W.C. Wehr. 2004. *Corylus*, *Carpinus*, and *Palaeocarpinus* (Betulaceae) from the middle Eocene Klondike Mountain and Allenby Formations of Northwestern North America. *International Journal of Plant Sciences* 164:807-822.

Pregill, G.K. and D.W. Steadman. 2004. South Pacific iguanas: human impacts and a new species. *Journal of Herpetology* 38:15-21.

Ronse DeCrane, L.P., P.S. Soltis and D.E. Soltis. 2003. Patterns of floral evolution in basal angiosperms: a phylogenetic analysis. *International Journal of Plant Sciences* 164:S329-S363.

**Ruhl, D.L.** 2003. *Archaeobotanical remains*. pp. 229-256. **Appendix IV:416-438** in J. Bense, ed. *Presidio Santa Maria de Galve: A Struggle for Survival in Early 18<sup>th</sup>-Century Spanish Colonial Pensacola*. University Press of Florida, Gainesville.

**Ruhl, D.L.** 2003. Envisioning Native American and Hispanic transformations of the Sixteenth- and Seventeenth-Century Georgia Bight Landscapes. pp. 183-198 in F.W. King and C.M. Porter, eds. *Zooarchaeology: papers to honor Elizabeth S. Wing*. *Bulletin of the Florida Museum of Natural History* 44(1).

**Ruhl, D.L.** 2003. [Review of] *Plants from the Past* by L. Blake and H. Cutler. *The Florida Anthropologist* 56(4):306-307.

Ruiz-Carus, R. and S.B. Davis. 2003. Register of an exceptionally large redbellied pacu, *Piaractus brachipomus* (Teleostei, Characidae), in east-central Florida, with gonad and diet analyses. *Florida Scientist* 66(3):184-188.

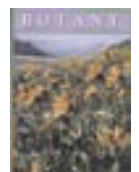
Russo, S., J. Terborgh and S.K. Robinson. 2004. Size-abundance relationships in an Amazonian bird community: implications for the energetic equivalence rule. *American Naturalist* 161:267-283.



**Slapcinsky, J.** and B. Coles. 2004. Revision of the genus *Pilsbryna* (Gastropoda: Pulmonata: Gastrodontidae) and comments on the taxonomic status of *Pilsbryna tridens*. *The Nautilus* 118(2):55-70.

Soltis, D.E. and P.S. Soltis. 2003. The role of phylogenetics in comparative genetics. *Plant Physiology* 132:1790-1800.

Soltis, D.E., P.S. Soltis and J.A. Tate. 2004. Advances in the study of polyploidy since *Plant Speciation*. *New Phytologist* 161:173-191.



Soltis, D.E., P.S. Soltis, M.D. Bennett and I.J. Leitch. 2003. Evolution of genome size in angiosperms. *American Journal of Botany* 90:1596-1603.

**Soltis, P.S.** and D.E. Soltis. 2003. The bootstrap in phylogenetic analysis. *Statistical Science* 18:256-267.

**Steadman, D.W.** 2003. Long-term change and continuity in the Holocene bird community of western New York State. *Bulletin of the Buffalo Society of Natural Sciences* 37:119-130.

**Steadman, D.W.** 2003. [Review of] *Mesozoic birds: above the heads of dinosaurs* by L.M. Chiappe and L.M. Witmer. *Auk* 120:1206-1208.

**Steadman, D.W., M.P. Tellkamp** and T.A. Wake. 2003. Prehistoric exploitation of birds on the Pacific coast of Chiapas, Mexico. *Condor* 105:572-579.

Sun, B., D.L. Dilcher, D.J. Beerling, C. Zhang, D. Yan and E. Kowalski. 2003. Variation in *Ginkgo biloba* L. leaf characters across a climatic gradient in China. *Proceedings of the National Academy of Sciences* 100:7141-7146.



Surge, D., K.J. Walker and M. Langley. 2003. Potential of archaeological catfish otoliths (*Arius felis*) as recorders of pre-industrial winter temperature, southwest Florida. *Ocean Sciences Meeting Suppl.*, EOS Trans. American Geophysical Union 84(52).

**Thompson, F.G.** 2003. Prologue: Malacologia Latino Americana. pp. xv-xvi in J. Monge-Najera and Z. Barrientos, eds. *Evista Biologica Tropical* 51 Suppl. 3.

**Thompson F.G.** and E.L. Mihalcik. 2003. *Melania curvicastrata* Reeve, 1861 and *Goniobasis paupercula* Lea, 1862 (currently *Elimia curvicastrata* and *E. paupercula*; Mollusca, Gastropoda): proposed conservation by designation of a neotype for *M. curvicastrata*. *Bulletin Zoological Nomenclature* 60:109-112.

Townsend, J.H. and K.L. Krysko. 2003. The distribution of Hemidactylus (Sauria: Gekkonidae) in northern peninsular Florida. *Florida Scientist* 66(3):204-208.

Townsend, J.H., K.L. Krysko and K.M. Enge. 2003. Introduced iguanas in southern Florida: more than 35 years of establishment and range expansion. *Iguana* 10:111-118.

Van Bael, S.A., J.D. Brawn and S.K. Robinson. 2003. Birds defend trees from herbivores in a neotropical forest canopy. *Proceedings of the National Academy of Sciences* 100:8304-8307.

Viana, J.P., J.M.B. Damasceno, L. Castello and W.G.R. Crampton. 2004. Economic incentives for sustainable community management of fishery resources in the Mamirauá Sustainable Development Reserve, Amazonas, Brazil. pp. 139-154 in K. Silvius, R. Bodmer and J. Frago, eds. *People and nature: wildlife conservation in South and Central America*. Columbia University Press, New York.

Vilorio, A.L., L.D. Miller and J.Y. Miller. 2003. *Pedaliodes pheretas* (Hewitson) form *grisela* Weymer (Nymphalidae: Satyrinae): Its identity and availability, with description of a new species. *Journal of the Lepidopterists' Society* 57:62-68.



**Walker, K.J.** 2003. An illustrated guide to trunk vertebrae of cottonmouth (*Agkistrodon piscivorus*) and diamondback rattlesnake (*Crotalus adamanteus*) in Florida. pp. 91-100 in F.W. King and C.M. Porter, eds. *Zooarchaeology: papers to honor Elizabeth S. Wing*. *Bulletin of the Florida Museum of Natural History* 44(1).

**Wang, X.** 2004. Plant cytoplasm preserved by lightning. *Tissue and Cell* 36(5):351-360.

**Webb, S.D., R.W. Graham, A.D. Barnosky, C.J. Bell, R. Franz, E.A. Hadley, E.L. Lundelius, Jr., H.G. McDonald, R.A. Martin, H.A. Semken, Jr. and D.W. Steadman.** 2004. Vertebrate paleontology. pp. 519-538 in A.R. Gillespie, S.C. Porter and B.F. Atwater, eds. *The Quaternary Period in the United States*. Elsevier Publishers, Amsterdam.

Wheeler, R.J., J.J. Miller, R.M. McGee, D.L. Ruhl, B. Swann and M. Memory. 2003. Archaic Period canoes from Newnan's Lake, Florida. *American Antiquity* 68(3):1-18.

Zanis, M.J., D.E. Soltis, P.S. Soltis, Y.-L. Qiu and E.A. Zimmer. 2003. Phylogenetic analyses and perianth evolution in basal angiosperms. *Annals of the Missouri Botanical Garden* 90:29-150.







Ashton, R. and Franz, R. 2004. Recommendation for the federal listing of gopher tortoise (*Gopherus polyphemus*) populations in Florida as a threatened species. Submitted to the U. S. Fish and Wildlife Service.

Burgess, G.H. and A. Morgan. 2003. Renewal of an observer program to monitor the directed commercial shark fishery in the Gulf of Mexico and South Atlantic: 2002(2) and 2003(1) fishing seasons. Commercial Shark Fishery Observer Program. Final Report submitted to the U.S. National Marine Fisheries Service, Highly Migratory Species Management Division.

Burgess, G.H. and A. Morgan. 2004. Support for an observer program monitoring the directed commercial shark fishery in the Atlantic Ocean and Gulf of Mexico. Semi-Annual Report submitted to the U.S. National Marine Fisheries Service, Highly Migratory Species Management Division.

Carlson, B. and B. Keegan. 2003. Talking Taino: "herbs, fish, and other scum and vermin." *Times of the Islands* Winter 2003/04:45-47.

Carlson, B. and B. Keegan. 2004. Talking Taino: in the beginning God created fish. *Times of the Islands* Spring 2004:39-43.

Cordell, A. 2003. *Paste Variability and Clay Resource Utilization in Pottery from the Ten Mile Creek Project, St. Lucie County, Florida*. Prepared for New South Associates, Stone Mountain, Georgia.

Daniels, J. 2004. Butterflies of the Carolinas: Field Guide. Adventure Publications, Cambridge, MN. 250 pp.

Daniels, J. 2004. Butterflies of Florida: Field Guide. Adventure Publications, Cambridge, MN. 250 pp.

Emery, K.F. 2003. An initial report on the faunal remains from El Aguacatal, Campeche, Mexico. Presented to Dr. Ray Matheny, Brigham Young University.

Emery, K.F. 2003. Restos animales. pp. 26-31 in D. Triadan and T. Inomata, eds. Informe final de la temporada de Laboratorio del Proyecto Arqueológico Aguateca. Presented to the Instituto de Antropología e Historia de Guatemala.

Emery, K.F. 2004. Analisis secundario de la taxonomía de los restos animales de Aguateca: informe del Trabajo de 2003-2004 en el FLMNH. pp. x-xx in T. Inomata, ed. *Informe final y solicitud de convenio, Proyecto Arqueológico Aguateca*. Presented to the Instituto de Antropología e Historia de Guatemala.

Emery, K.F. 2004. Uso de animales en Piedras Negras: analisis preliminar. Presented to the Instituto de Antropología e Historia de Guatemala.

Emmel, T.C. and A. Sourakov. 2004. Monarchs. pp. 1452-1456 in J.L. Capinera, ed. *Encyclopedia of insects*. Kluwer Academic Press, New York.

Hulbert, R.C. 2003. Paleo math: Thomas Farm - 10 million years - Tyner Farm. *Pony Express*, 12(1):4.

Keegan, B. and B. Carlson. 2003. Talking Taino: lizards and snakes. *Times of the Islands* Summer 2003:37-40.

Keegan, B. and B. Carlson. 2003. Talking Taino: the Spanish translation. *Times of the Islands* Fall 2003:33-36.

Keegan, B., C. Hofman and M. Hoogland. 2004. Encounters with the first inhabitants of Iotanalao. *Visions of St. Lucia* (Tourist Guide) 14:48-53.

Keegan, W.F. 2004. *Preliminary report on excavations at Paradise Park, Jamaica*. 2004. Submitted to the Jamaica National Heritage Trust.

Keegan, W.F., C.L. Hofman and M.M.L.P. Hoogland. 2003. Archaeological reconnaissance at St. Lucia, West Indies 4-17-2003 to 5-25-2003. Annual report submitted to the St. Lucia Archaeological and Historical Society.

King, F.W. and R. Godshalk. 2003. Mud, Root Balls, and Other Tasty Tidbits in Crocodilian Stomachs. 6 p. [Online] Available at: <http://www.flmnh.ufl.edu/natsci/herpetology/herpbiology/TidbitsinCrocDiet.htm>

Manchester, S. 2004. Photoshop tips for palynology. *American Association of Stratigraphic Palynologists Newsletter* 37(1):16-18.

Miller, J.Y. 2003. Butterflies and Moths. *Wildlife Art*.

Miller, L.D. and J.Y. Miller. 2004. *The butterfly handbook*. New Burlington Books, Quarto Press.

Moore, B.R., D.L. Dileher and M.A. Gibson. 2003. Paleoenvironment, depositional setting, and plant fossil diversity found in the Claiborne Formation, (Middle Eocene) clay deposits of western Tennessee. pp. 187-198 in *Field trip guidebook*. Geological Society of America. State of Tennessee Department of Environment and Conservation, Division of Geology, Nashville, TN.

Page, L.M., R. Beaman, V. Funk, M. Jeffords, D. Lipscomb, M. Mares, A. Prather, D. Stevenson, J. Stevenson and Q. Wheeler. 2004. *LINNE: legacy infrastructure network for natural environments*. Brochure for the National Science Foundation.

Paine, W.G. and S.E. Fazenbaker. 2004. Designing and Implementing a Database-Driven Image Gallery in *Museums and the Web 2004: Selected Papers from an International Conference*. Available: <http://www.archimuse.com/mw2004/papers/paine/paine.html>

Paulay, G., ed. 2004. *The Marine biodiversity of Guam and the Mariana Islands*. On-line publication of the Florida Museum of Natural History <http://www.flmnh.ufl.edu/reefs/guam/index.htm>.

Portell, R.W. and J.G. Agnew. 2004. Pliocene and Pleistocene decapod crustaceans. *Florida Fossil Invertebrates* 4:1-29.

Ruhl, D.L. 2003. *Archaeobotanical analysis of selected samples from the West Williams Site (8H1509)*. Report on file Environmental Archaeology Program- Project # 609, Florida Museum of Natural History, Gainesville, FL and SEARCH, Inc., Gainesville, FL.

Sara, T.R. and W.F. Keegan, eds. 2004. *Archaeological survey and paleoenvironmental investigations of portions of U.S. Naval Station Guantanamo Bay, Cuba*. Submitted to the Department of the Navy, Atlantic Division, Naval Facilities Engineering Command under Geo-Marine, Inc.

Sourakov, A. 2004. Night blooming plants and their insect pollinators. pp. 1556-1558 in J.L. Capinera, ed. *Encyclopedia of insects*. Kluwer Academic Press, New York.

Sourakov, A. 2004. Pyrrolizidine alkaloids and Tiger Moths (Lepidoptera: Arctiidae). pp. 1857-1858 in J.L. Capinera, ed. *Encyclopedia of insects*. Kluwer Academic Press, New York.

Sourakov, A. and T.C. Emmel. 2004. Insect conservation. pp. 595-604 in J.L. Capinera, ed. *Encyclopedia of insects*. Kluwer Academic Press, New York.

Thompson, F. G. 2003. [Review of] *Guide to William Bartram's travels: following the trail of America's first great naturalist* by B. Sanders. *The Traveller*.

Thompson, F. G. 2004. *An identification manual of the freshwater snails of Florida*. 4<sup>th</sup> ed. On-line publication of the Florida Museum of Natural History (<http://www.flmnh.ufl.edu/natsci/malacology/fl-snail/snails1.htm>).

Walker, K.J., D.R. Ruhl and L. Greene. 2003. Historical ecology of the Everglades National Park: fourth annual report on environmental archeological analysis, cataloging, and curation of SEAC Accession 590. Southeast Archeological Center, National Park Service, Tallahassee, FL.

Worth, J. 2003. Spanish Missions in Georgia in J.C. Inscoe, ed. *The New Georgia Encyclopedia*. Online publication: <http://www.georgiaencyclopedia.org/nge/Article.jsp?id=h-572>

Worth, J. 2003. Spanish Exploration in J.C. Inscoe, ed. *The New Georgia Encyclopedia*. Online publication: <http://www.georgiaencyclopedia.org/nge/Article.jsp?id=h-1012>



## PROFESSIONAL STAFF

July 1, 2003 – June 30, 2004

### DIRECTOR'S OFFICE

Director – Douglas S. Jones, Ph.D.  
Associate Director – Craig D. Shask, Ph.D.  
Executive Secretary – Sharon K. Thomas

### Budget and Human Resources

Coordinator – A. Darlene Kornik  
Office Manager – Barbara L. Hackett  
Personnel – Leslie L. Campbell  
Purchasing – Mary B. Windham  
Travel – Marlene C. Wilson

### Institutional Advancement

Assistant Director – Susan B. Plarr  
Development – Robert K. Hutchinson  
Secretary – Susan A. Jarama  
Public Relations/Marketing – Paul E. Ramey  
Membership Coordinator – Jennifer Pocheirek  
Mary F. Schumacher  
Special Events Coordinator – Caroline Parnis

### Museum Technology

Coordinator – William G. Paine  
Network Manager – Daniel F. Stoner  
Webmaster – Sarah E. Farenstaber

### DEPARTMENT OF NATURAL HISTORY (Collections & Research)

Chair and Associate Director – David W. Stoddman, Ph.D.  
Sr. Secretary – Pamela W. Dennis  
Managing Editor – Margaret E.B. Joyner  
Anthropology Registrar – Elise V. LeGendre

### Caribbean Archaeology

Curator – William F. Keegan, Ph.D.

### Environmental Archaeology

Assistant Curator – Katherine F. Emery, Ph.D.  
Collection Managers – Selma J. Scudder  
Irey R. Quimby  
Curator Emerita – Elizabeth S. Wing, Ph.D.

### Florida Archaeology

Curators – William H. Marquardt, Ph.D.  
Jerald T. Milanich, Ph.D.  
Coordinator, Randall Research Center – John E. Worth, Ph.D.  
Collection Manager – Scott E. Mitchell  
Ceramic Technologist – Ann S. Cordell  
Assistant Scientist – Karen J. Walker, Ph.D.

### Herbarium

Curator and Keeper – Norris H. Williams, Ph.D.  
Collection Manager – Kent D. Perkins  
Sr. Biologist – W. Mark Whetten, Ph.D.  
Program Assistant – Gertrude R. Lisdler

### Herpetology

Curators – J. Wayne King, Ph.D.  
Max A. Nickerson, Ph.D.  
Associate Scientist – L. Richard Fries, Jr.  
Collection Manager – Kenneth L. Krysko, Ph.D.  
Assistant Scientist – J. Percin Jones, Ph.D.

### Ichthyology

Assistant Curator – James S. Albert, Ph.D.  
Coordinator, Shark Program – George H. Burgess  
Collection Manager – Robert H. Robins  
Visiting Assistant Scientist – William G.R. Crumpton, Ph.D.  
Sr. Biologist – Catherine L. Bester  
Sr. Biologist – Alexis A. Morgan

### Invertebrate Paleontology

Curator – Douglas S. Jones, Ph.D.  
Collection Manager – Roger W. Porcell

### Katharine Ordway Chair of Ecosystem Conservation

Emergent Scholar – Scott K. Robinson, Ph.D.  
Post-Doctoral Research Associate – Jeffrey Hoover, Ph.D.

### Latin American Art and Archaeology

Curator – Susan Millican, Ph.D.

# FLMNH STAFF



### Lepidoptera (Allan Museum of Entomology)

Curator – Ler D. Miller, Ph.D.  
Curator – Jacqueline Y. Miller, Ph.D.

### Lepidoptera (McGuire Center)

Center Director – Thomas C. Emlen, Ph.D.  
Collection Manager – George Austin, Ph.D.  
Program Assistant – Christine Elazar  
Post-Doctoral Research Associate – Andree Sotnikov, Ph.D.

### Malacology

Curator – Fred G. Thompson, Ph.D.  
Associate Curator – Gustav Paulay, Ph.D.  
Collection Manager – John D. Slapinski  
Post-Doctoral Research Associate – Christopher P. Meyer, Ph.D.

### Mammalogy

Assistant Curator – David L. Reed, Ph.D.  
Collection Managers – Candace L. McCaffery  
Laurie Williams

### Molecular Systematics & Evolutionary Genetics

Curator – Pamela S. Soto, Ph.D.  
Assistant Scientist – Matthew Ottensmeyer, Ph.D.  
Post-Doctoral Research Associate – Jennifer A. Tate, Ph.D.

### Museum Studies

Curator – Charlotte M. Porter, Ph.D.

### Ornithology

Curator – David W. Stoddman, Ph.D.  
Collection Managers – Andrew W. Kratter, Ph.D.  
Thomas A. Weber, Ph.D.

### Paleobotany

Graduate Research Professor – David L. Dilcher, Ph.D.  
Curator – Steven B. Manchester, Ph.D.  
Collection Manager – Hongshan Wang, Ph.D.  
Biologist – Terry A. Lott

### Spanish Colonial Archaeology

Distinguished Research Curator – Kathleen A. Deagan, Ph.D.  
Collection Manager – Alfred J. Woods

### Vertebrate Paleontology

Curator – Bruce J. MacFadden, Ph.D.  
Assistant Curator – Jonathan Block, Ph.D.  
Collection Manager – Richard C. Hulbert, Ph.D.  
Sr. Biologist – Russell W. McCorty II  
Biologist – Arthur R. Poyer  
Post-Doctoral Research Associate – Penelope Higgins, Ph.D.  
Distinguished Research Curator Emeritus – S. David Webb, Ph.D.

### EXHIBITS AND PUBLIC PROGRAMS

Associate Director – Bruce J. MacFadden, Ph.D.  
Sr. Secretary – Katherine K. Gerard  
Office Manager/Traveling Exhibits – Charlene G. Smith  
Photography – Jeffrey L. Gage  
Editor – Enka B. Simons  
IT Practitioner – Charles B. Tompkins

### Education

Assistant Director – Betty D. Camp, Ph.D.  
Public Programs – Marilyn M. Roberts  
Volunteers, Children's Classes – Pam J. Anderson, Ph.D.  
Tours – Jeanette E. Carlisle  
Post-Doctoral Research Associate – Shari A. Ellis, Ph.D.

### Exhibits

Assistant Director – Darcie A. MacMahon  
Project Director – Kurt Auffenberg  
Artists – Stacey A. Beshony  
Brian D. Chamberlain  
Ronald A. Chesser  
Robert S. Leavy  
Jay C. Weber

Carpenters/Cabinet makers –  
J. Patrick Bennett  
Nathan B. Brown  
Designers – Ian M. Beshony  
Jay C. Fowler

### Security

Sr. Security Guard – Virginia E. Lawrence  
Security Guards – John B. McInroch  
Harvey E. Yawn



[www.flmnh.ufl.edu](http://www.flmnh.ufl.edu)